

2019 – 2020 Public Lands Transportation Fellowship Program

Planning a for a Future of Mobility and Access to Public Lands

Presented by:

Jody DeMeyere and Vince Ziols, Detroit River IWR

Webinar logistics

- Duration is 1:00 - 2:30 PM Eastern
- Webinar – recorded and archived. For quality of recording, phone will be muted during presentation
- If listening on the phone, please mute your computer
- To maximize the presentation on your screen click the 4 arrows in the top right of the presentation
- At the end there will be time for Q&A
- There is a handout pod at the bottom of the screen

Today's Presenters



Advanced Public Lands
Transportation Fellow
Vince Ziols



Visitor Services Manager
Jody DeMeyere

Goal of this Webinar

- Document and archive the work completed by the PLTF at the DRIWR from 2018-2020, including his lessons learned and tips and tricks for applying these to other USFWS units.
- Assist the future fellows.

Agenda

- Introduction by Visitor Services Manager
- Planning for the Region
- Noteworthy Projects
- Big Wins
- Rotations
- Lesson Learned for Future Fellows

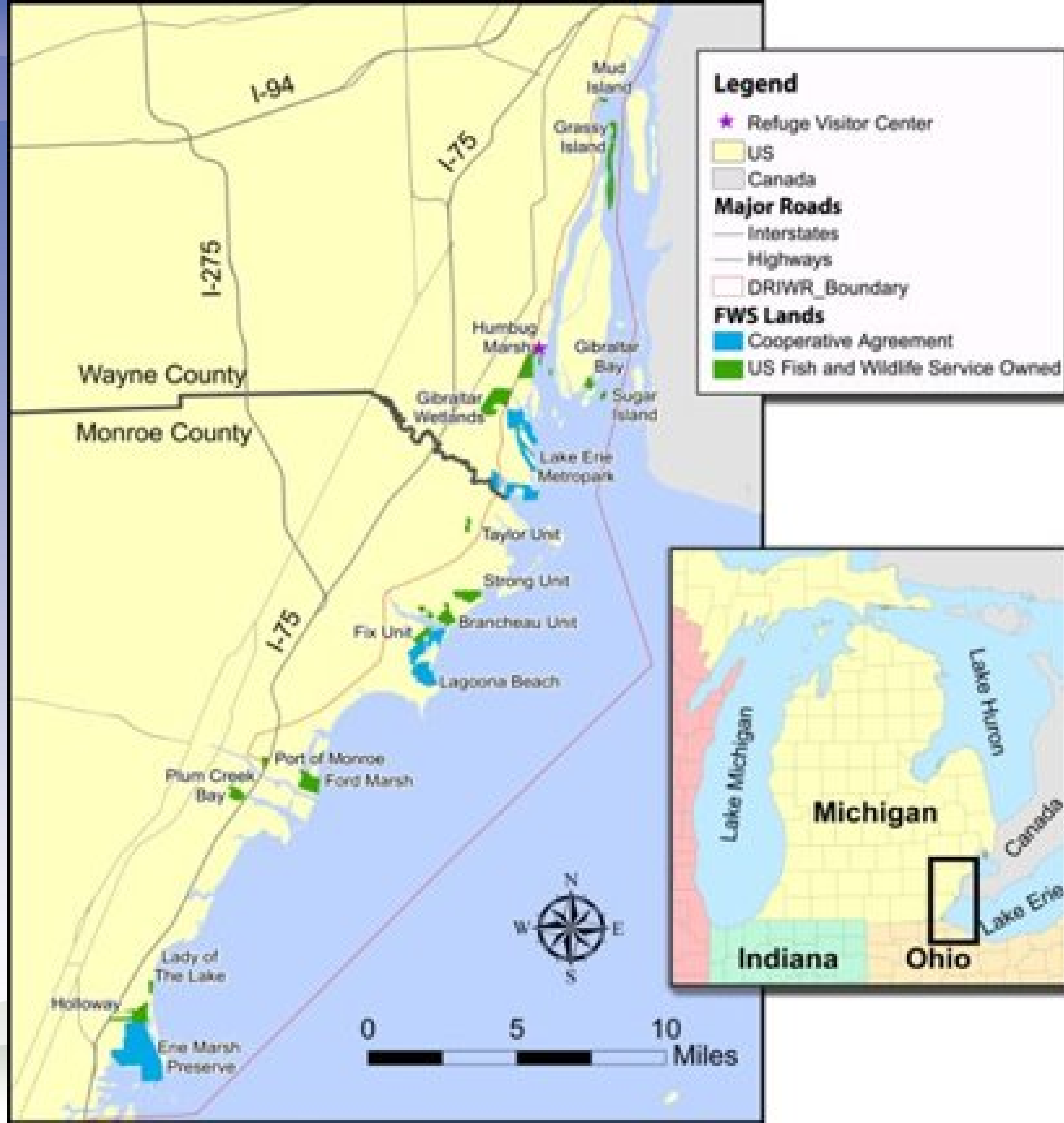


Source: Tom Kachelmeyer

Introduction

Visitor Services Manager

Jody DeMeyere



Challenge: 80% of Americans live in urban areas.



A close-up photograph of a bird's nest, constructed from dry, brown reeds and grass, nestled within a dense thicket of tall, slender reeds. Two light blue eggs are visible inside the nest. The scene is illuminated by bright sunlight, creating strong shadows and highlights on the dry vegetation. The background is a deep blue, suggesting water or a clear sky.

Barriers: No Time, Skills, Funds, Comrades,
Safety, Transportation

The image features a vibrant orange and yellow sunset background. In the lower-left foreground, the dark silhouette of a tree branch with small leaves is visible. Two birds, likely cormorants, are perched on the branch. One bird is positioned higher and further to the left, facing right. The second bird is lower and further to the right, also facing right. The bright light from the setting sun creates a strong backlighting effect, silhouetting the birds and the tree.

Refuge's Urban Vision:

Detroit River International Wildlife Refuge is a trusted and welcoming channel to nature for all people, on and off refuge; where 'everyone is a naturalist' and 'nature is everywhere.'

Photo credit: USFWS Volunteer/Jerry Jourdan



Overcoming transportation barrier!

Photo credit: pixabay.com



Transportation Fellow,
Vince, to the rescue!



Vince Ziols

2018-2020 PLTF



Presenter Profile

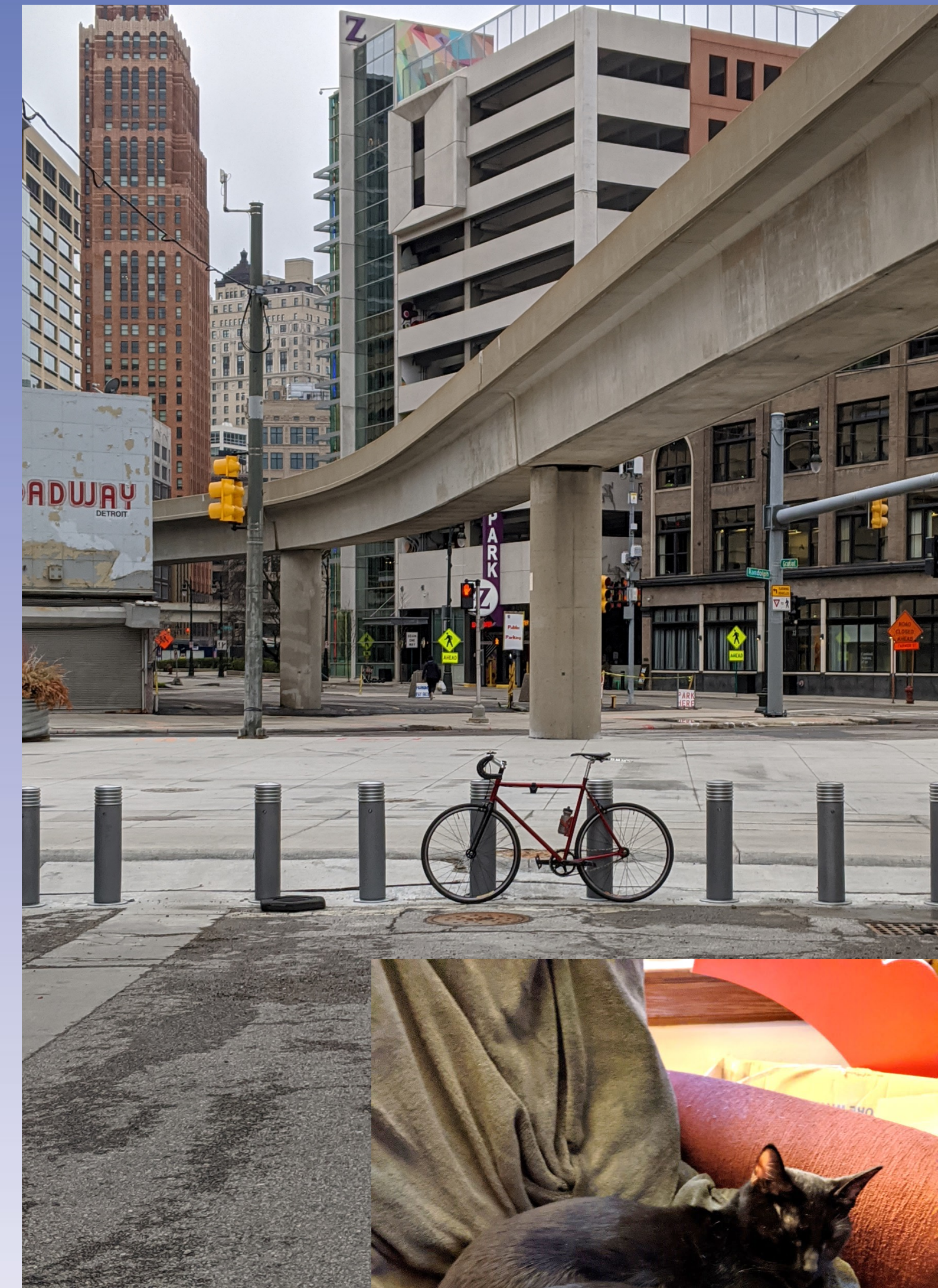
Name: Vince Ziols

Start Date: June 16th, 2018

Place of Birth: Chicago, IL

Education background: M.U.P.P.,
University of Illinois at Chicago; B.S. in
Journalism, University of Dayton

Professional background:
Environmental & sustainability
planning, communication and outreach,
grant writing, community development,
and transportation planning

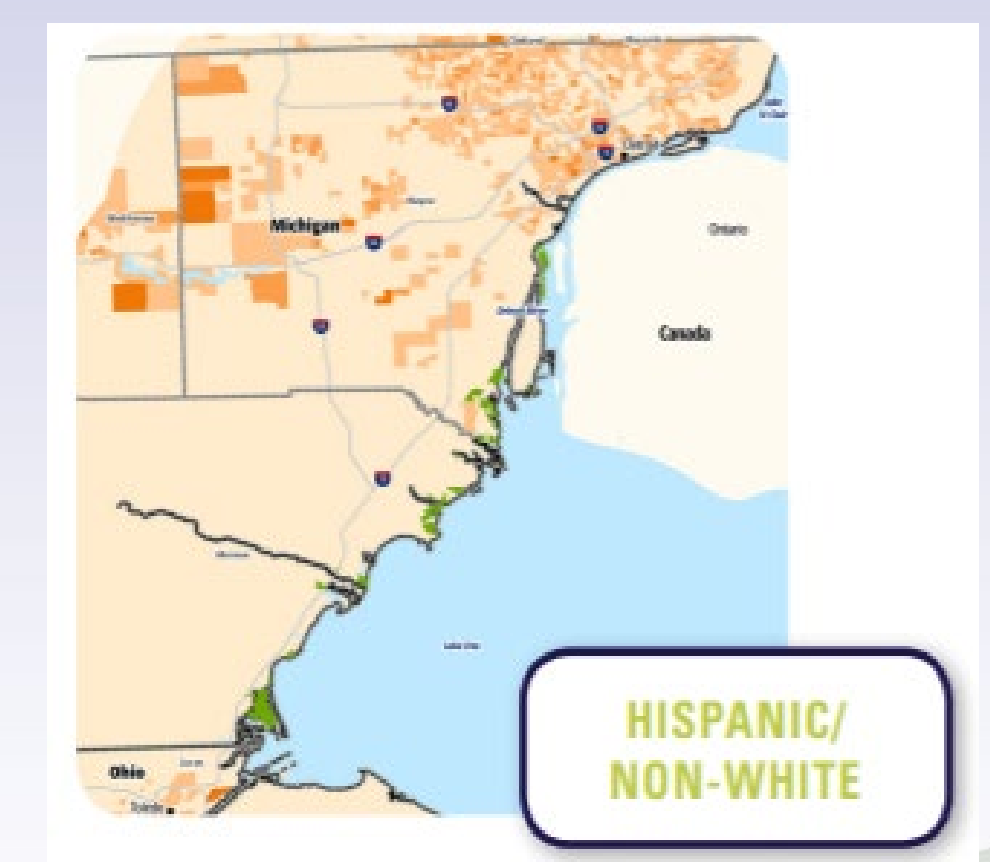
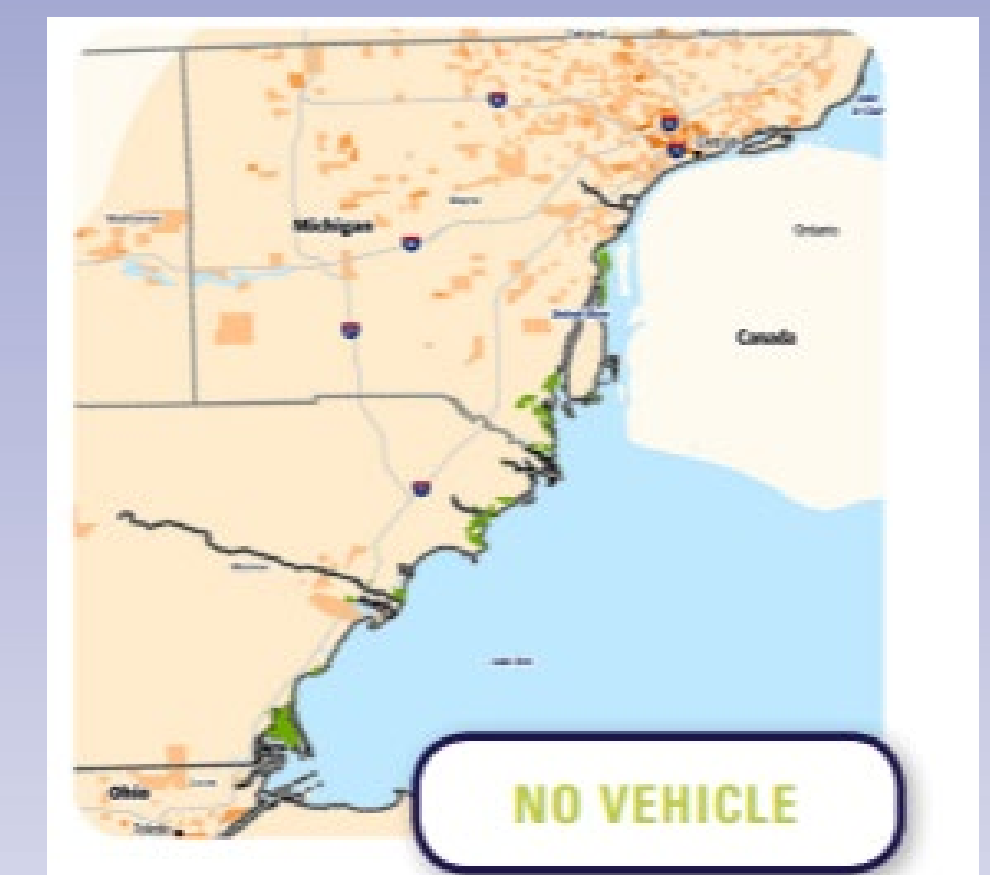
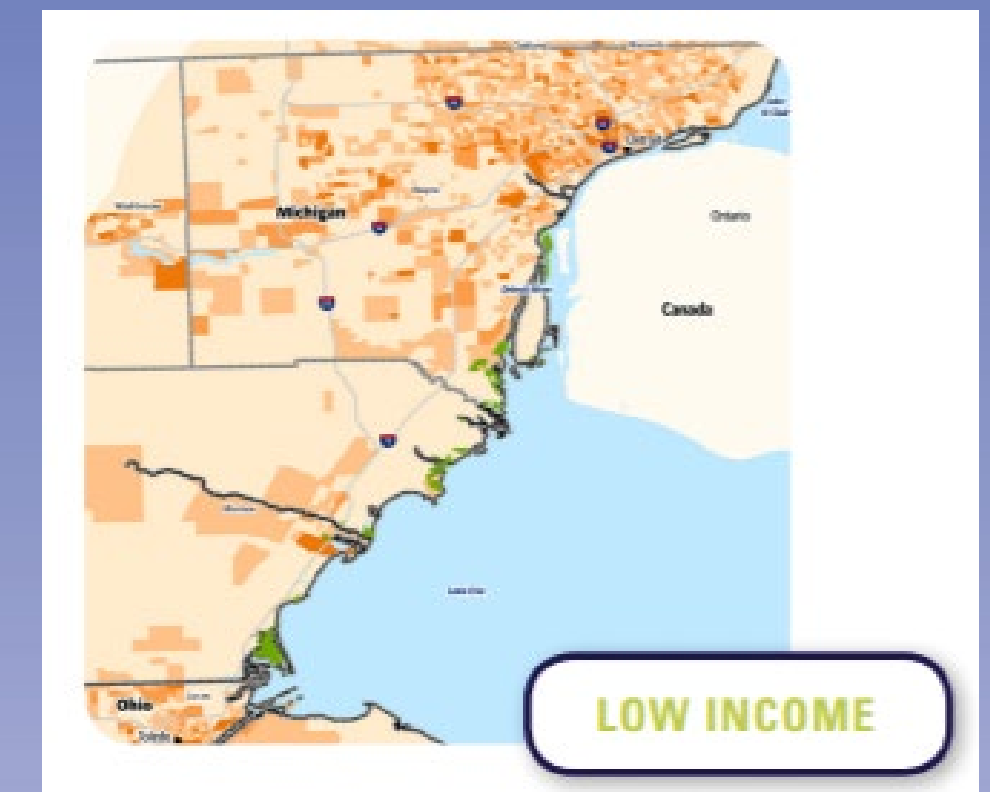
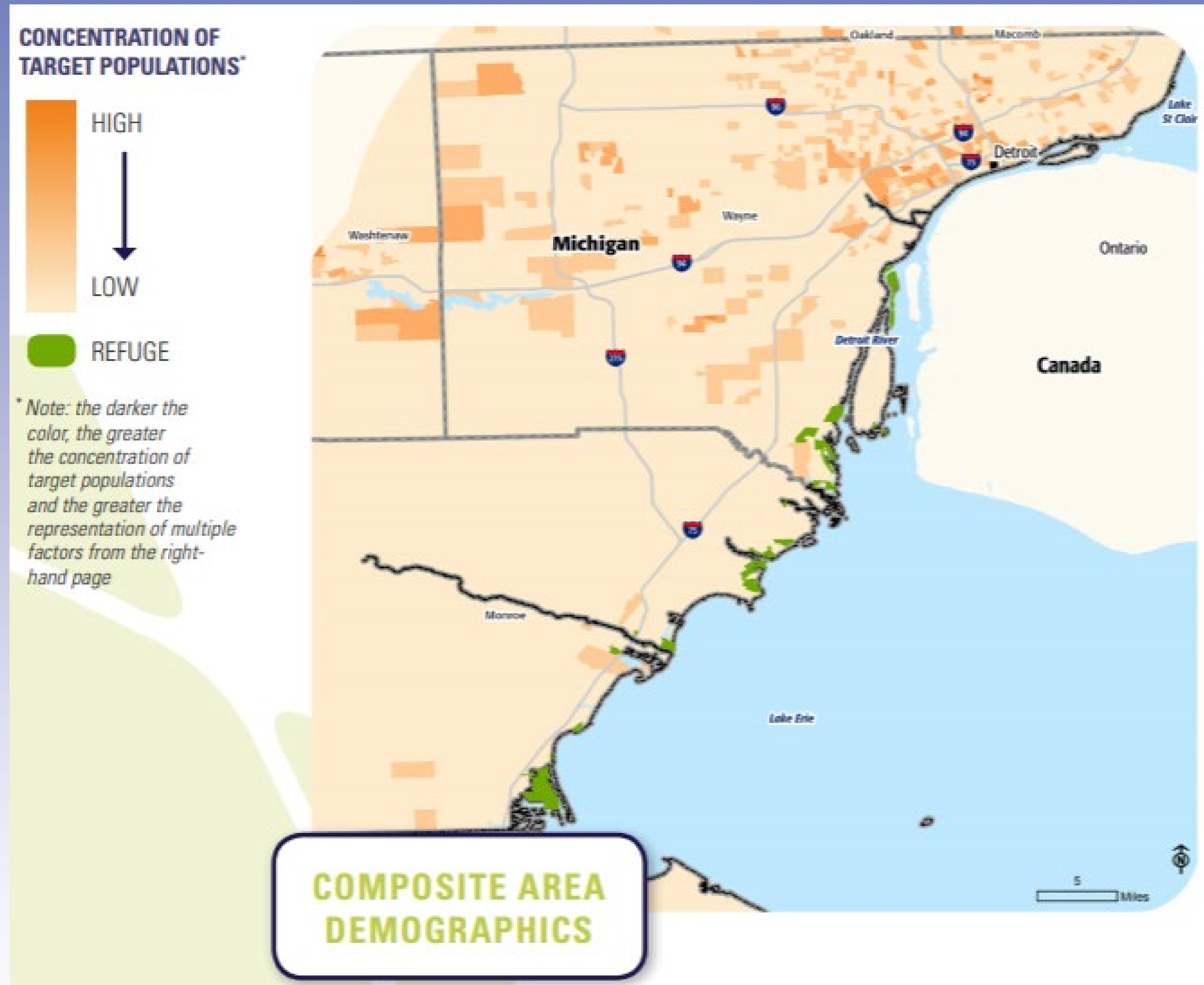


Detroit River International Wildlife Refuge





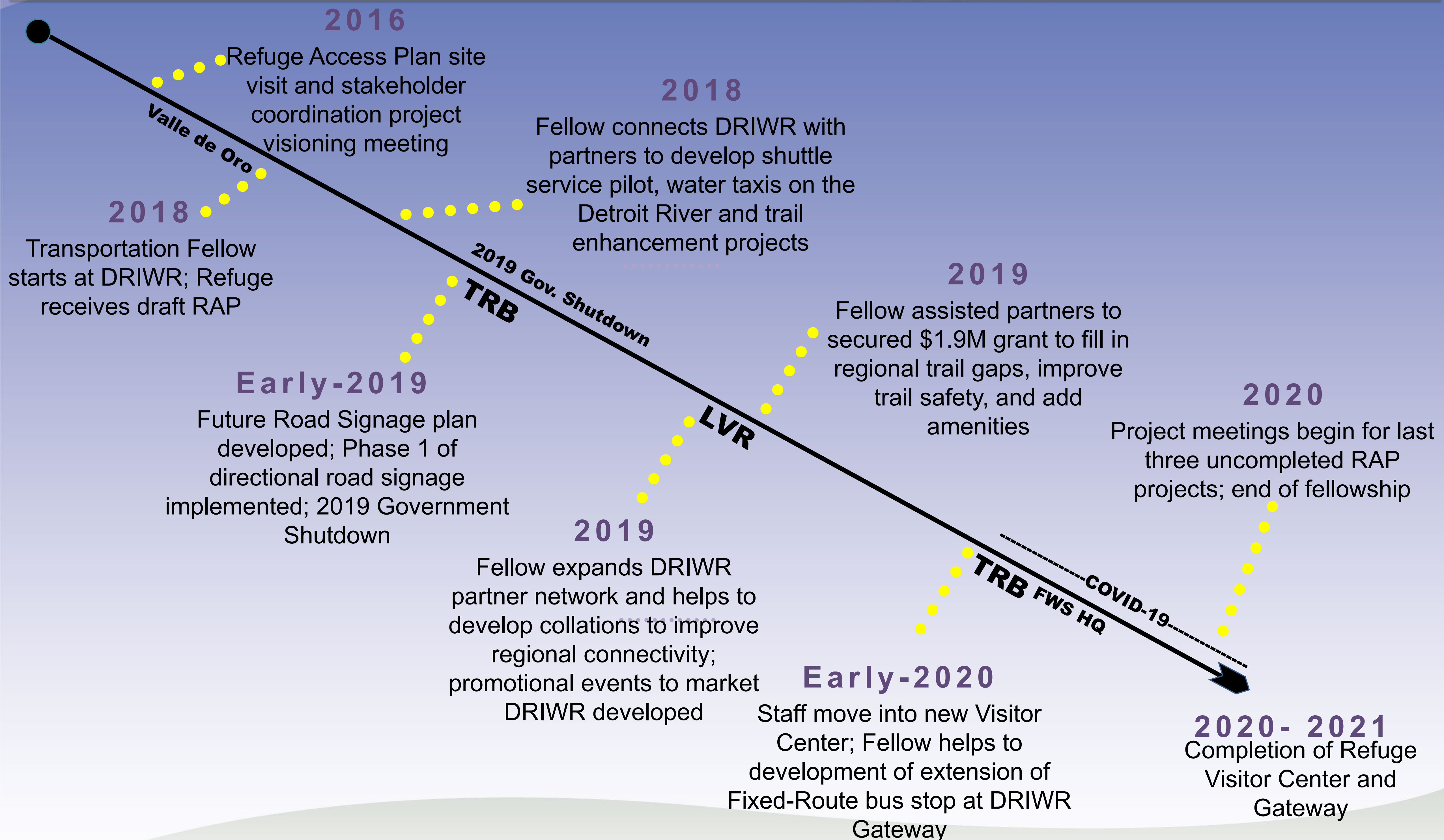
Targeted Communities



The Detroit area is full of opportunities to connect with nature! Check out some of these beautiful spots!



Fellowship & DRIWR Timeline

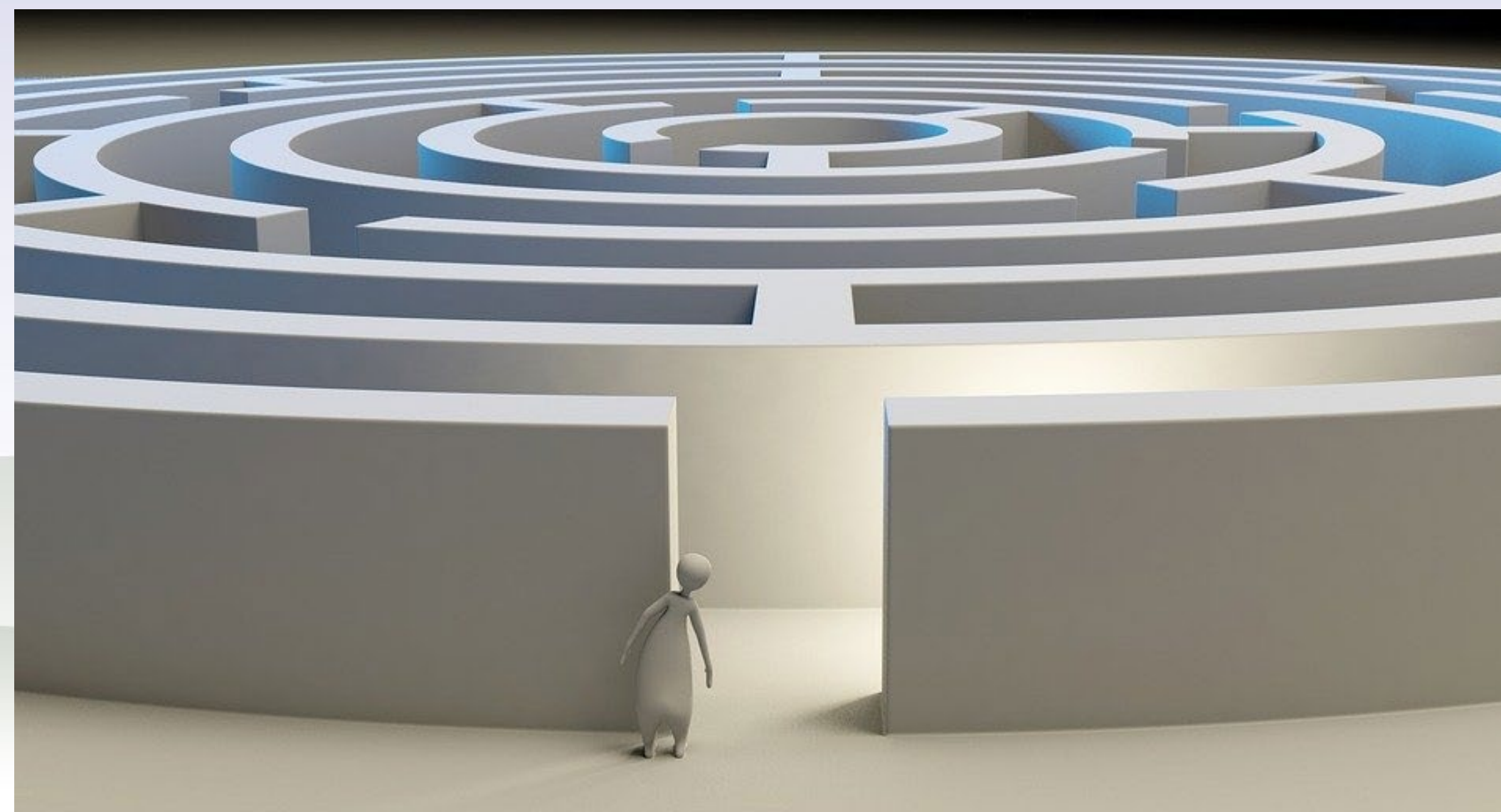


Fellow Project Themes

- Refuge Transportation Planning
- RAP project development
- Gateway Community development
- Partner Engagement
- Coalition building
- Recreational promotion and marketing
- Technical assistance for partners
- Regional recreation trail development
- Enhance and maintain refuge transportation assets
- Improved visibility of Refuge on transportation networks
- Performance measures and evaluations
- Case studies, tech memos, reference reports

Challenges & Opportunities

- Visitor Center and Gateway Delays
- Only transportation professional on staff
- Learning curve on local/regional knowledge
- Contract time
- Government Shutdown
- COVID-19
- Figure out new projects based on research
- Independence to carry out my own projects
- Getting imbedded in the local & national transportation professional network
- Fellowship extension

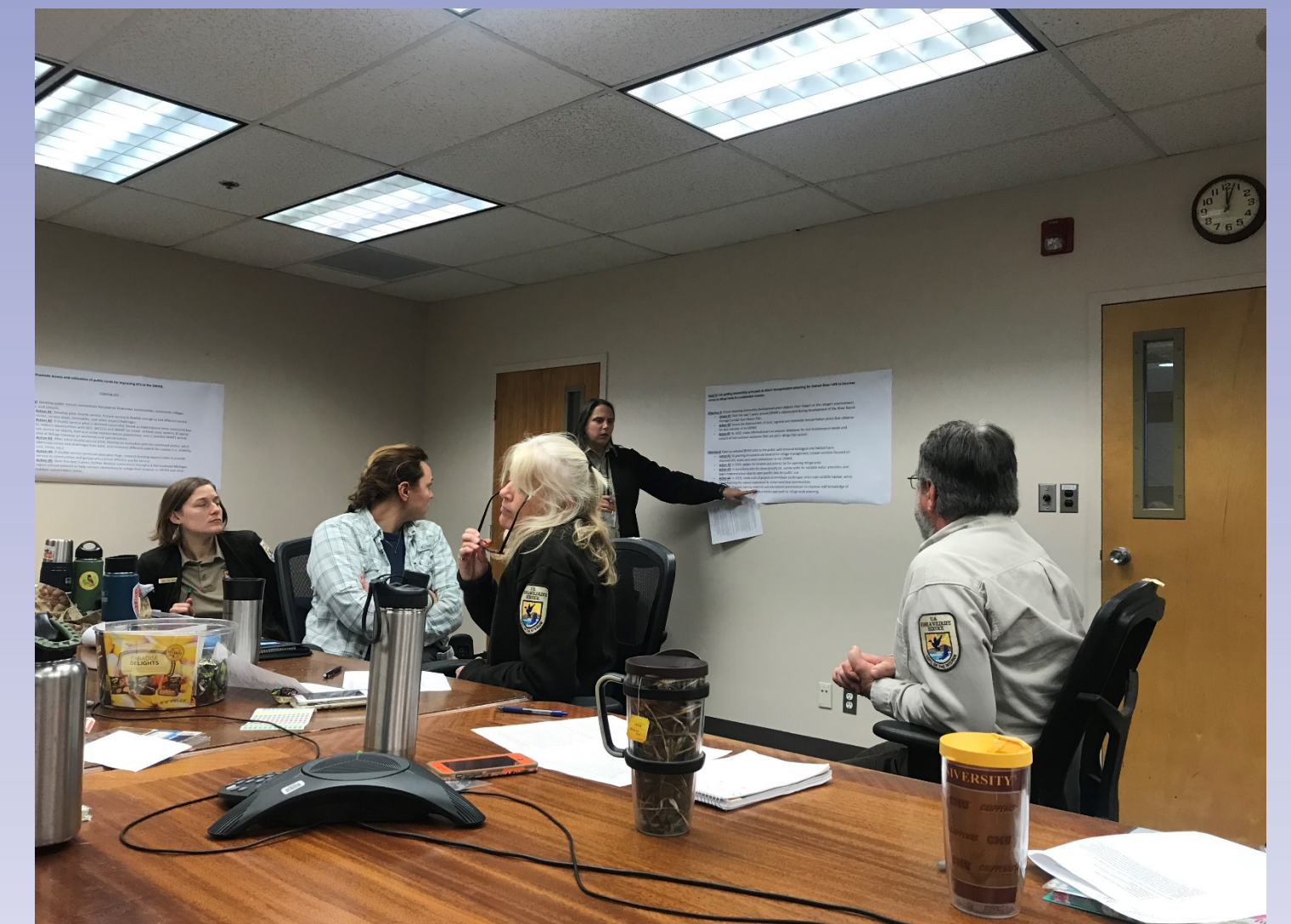


Noteworthy Projects: Refuge Transportation Planning



Photo credit: pixabay.com

PRIORITY RANK (ABC)	RANK (123)	MISSION CRITICAL (Y-N)	PROJECT/ACTIVITY	ASSIGNMENT	DUE DATE	COMPLETE (Y)
			Opening Units			
A	1		Participate in open units discussion, start workgroup, update timeline for opening up units	Vince/Jody	ongoing	
A	1		Develop parking lot plan for Taylor Unit	Vince/Jody/ Nicely	summer 2019	
A	2		GWU: Survey of Unit	Vince/Jessie	winter/spring 2019	
A	2		PCBU: Survey of Unit	Vince/Jessie/ Steve	winter/spring 2019	
B	1		Develop Habitat Management needs and potential plan	Jessie/Steve/ Techs		
B	1		GWU: Apply for permits for culverts	VS/ Vince		
B	1		Create project list for work to be done on open units		ongoing	
B	2		Taylor Unit: Write CD	Jody/ Vince		
B	2		GWU: Write CDs	Jody/ Vince		
B	3		Begin process of laying out trails at GWU	Jody/ Vince		
C	1		Road Signage Implementation	Jody/ Vince		



5 Year AWP

Noteworthy Projects:

Destination Downriver

Tasks:

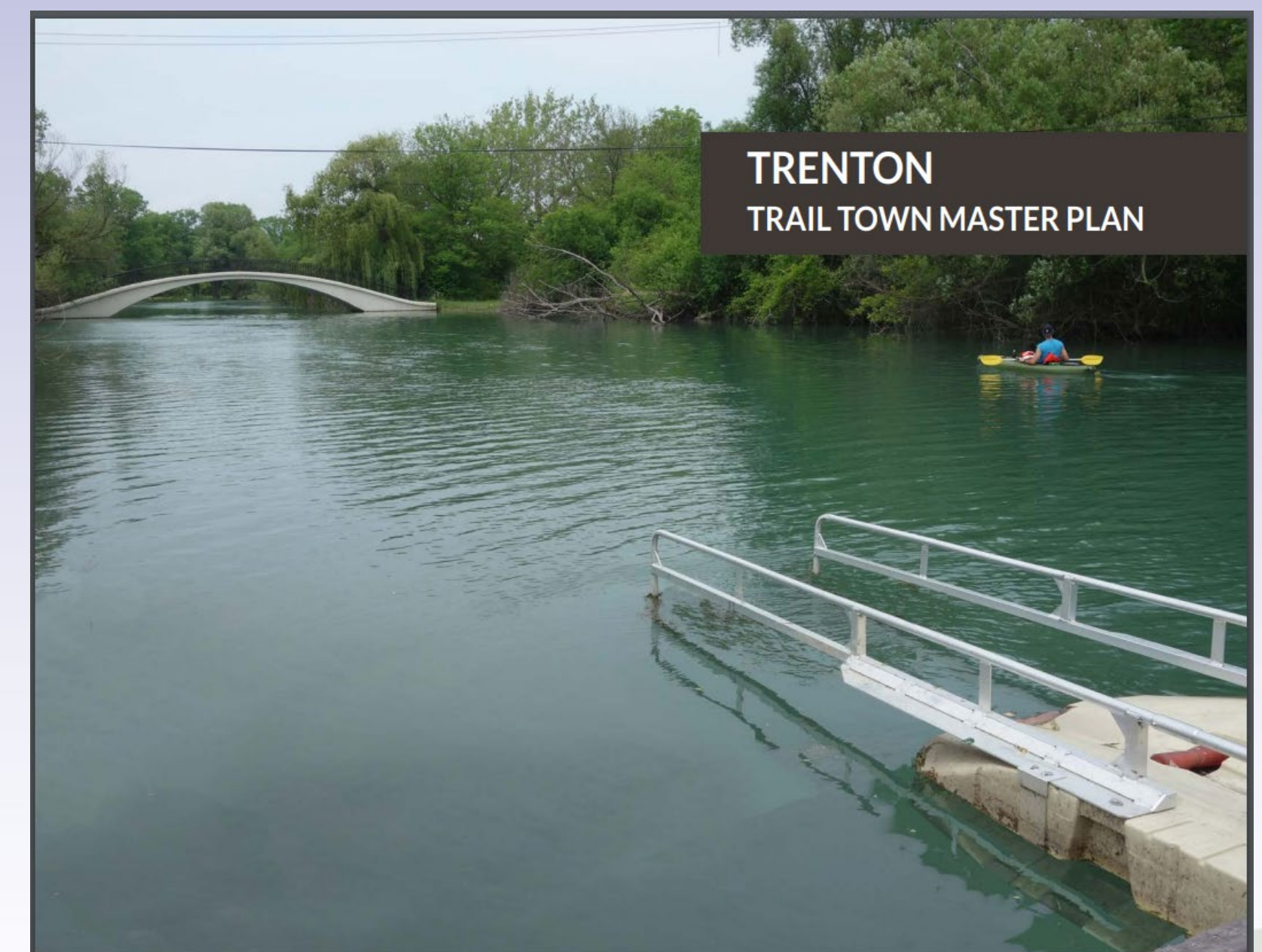
- Improve Bike/Ped Access
- Outreach to Local Stakeholders
- Develop a public Outreach/Marketing Plan and Advertising Materials

Starting Process:

- Connection to recreational trails non profit

Assistance:

- Contributed to branding meetings for region
- Collation building
- Assisted in targeting grants
- Facilitate development meetings on visitation and performance measures
- Offered expertise in community improvement initiatives
- Helped stakeholders develop county wide recreational trail based group and trail coordinator position



Noteworthy Projects:

Task:

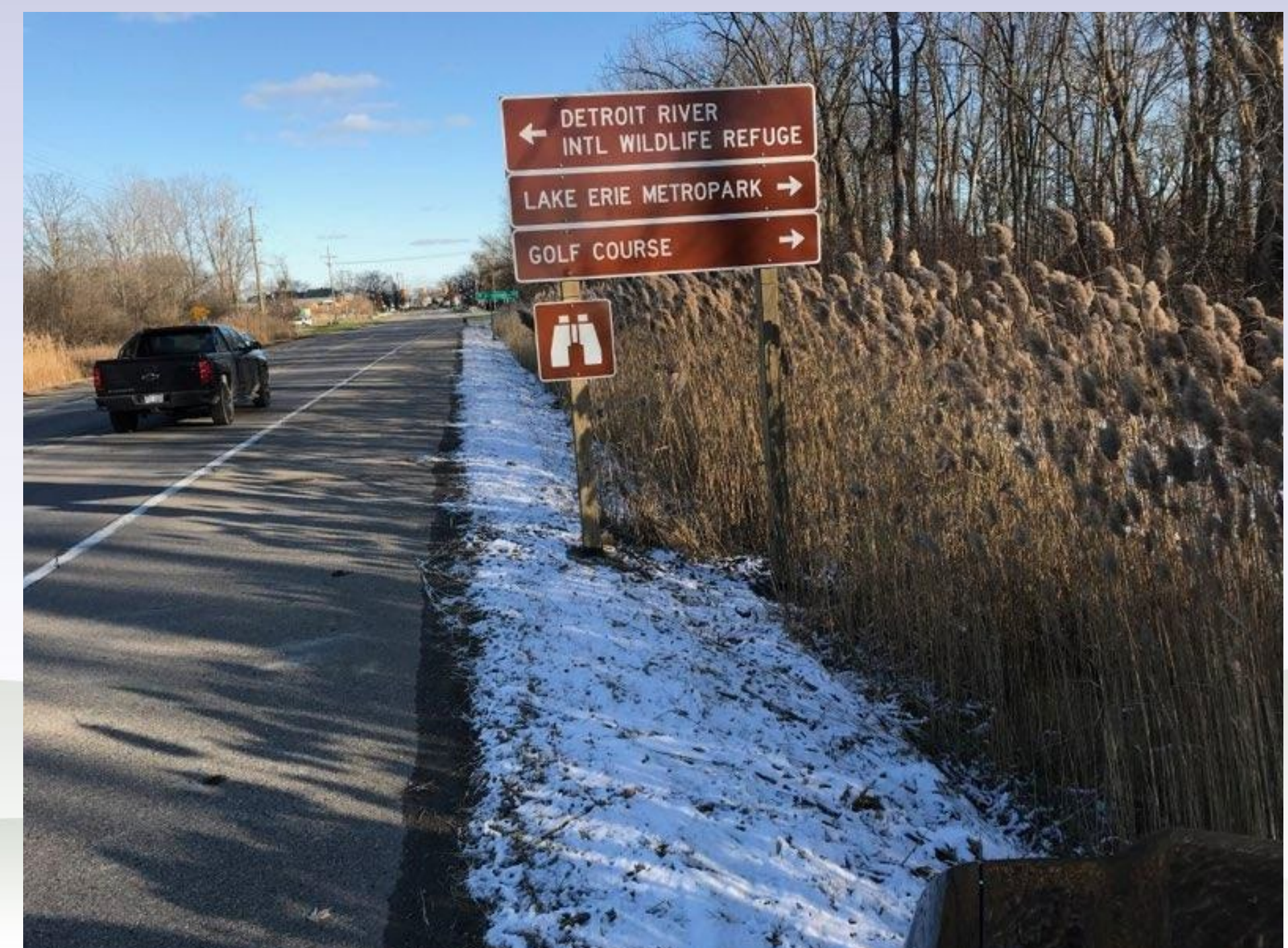
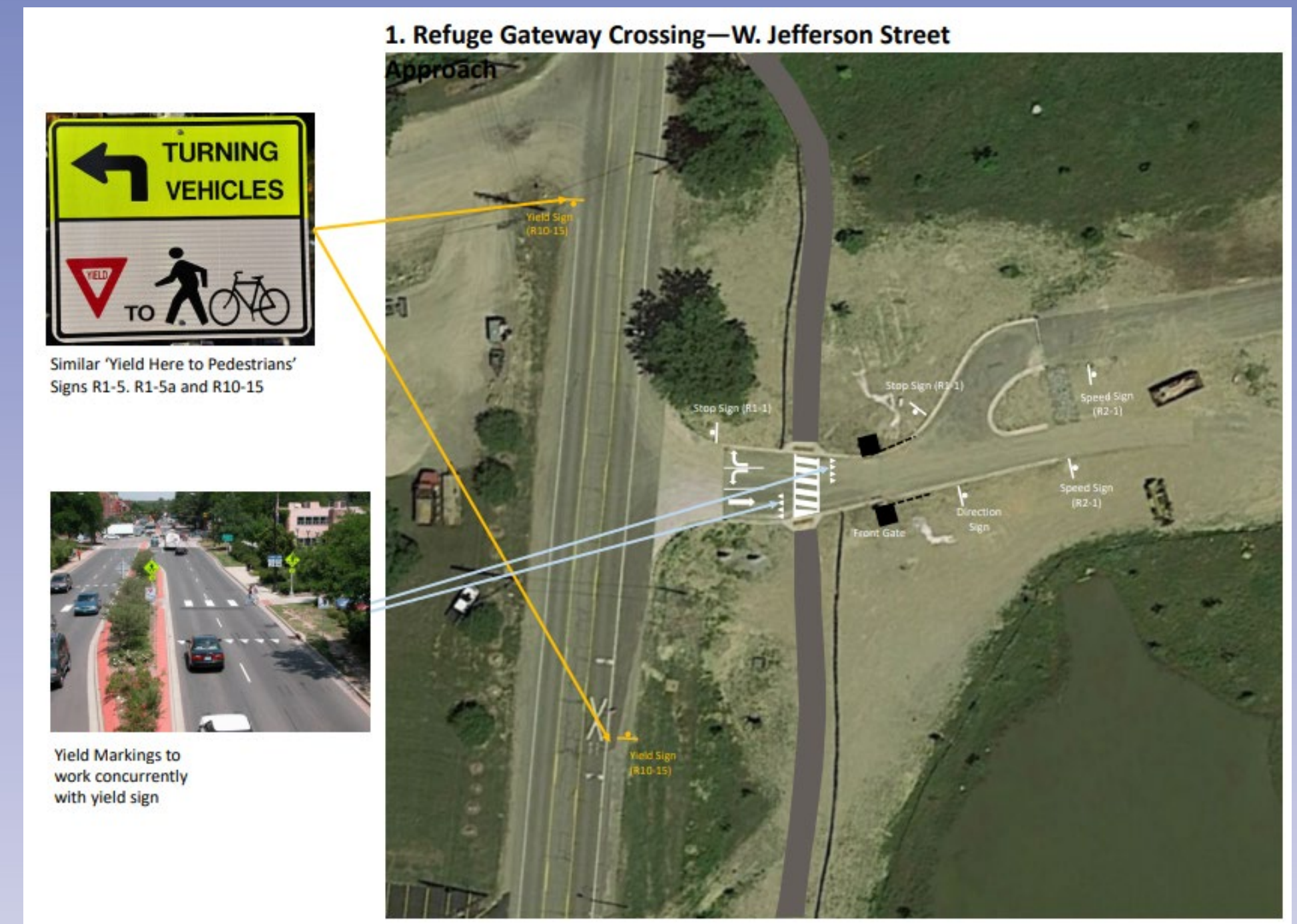
- Improve Bike/Ped Access
- Promote/market DRIWR

Starting Process:

- Surveyed the area
- Researched signage at similar intersections nationally
- Connect with county and state road agencies

Materials Created:

- Future DRIWR directional signage needs & vicinity maps
- Signage inventory
- Safety Signage Considerations Packet
- Worked with the county and local community to implement safety strategies



Noteworthy Projects:

Tasks:

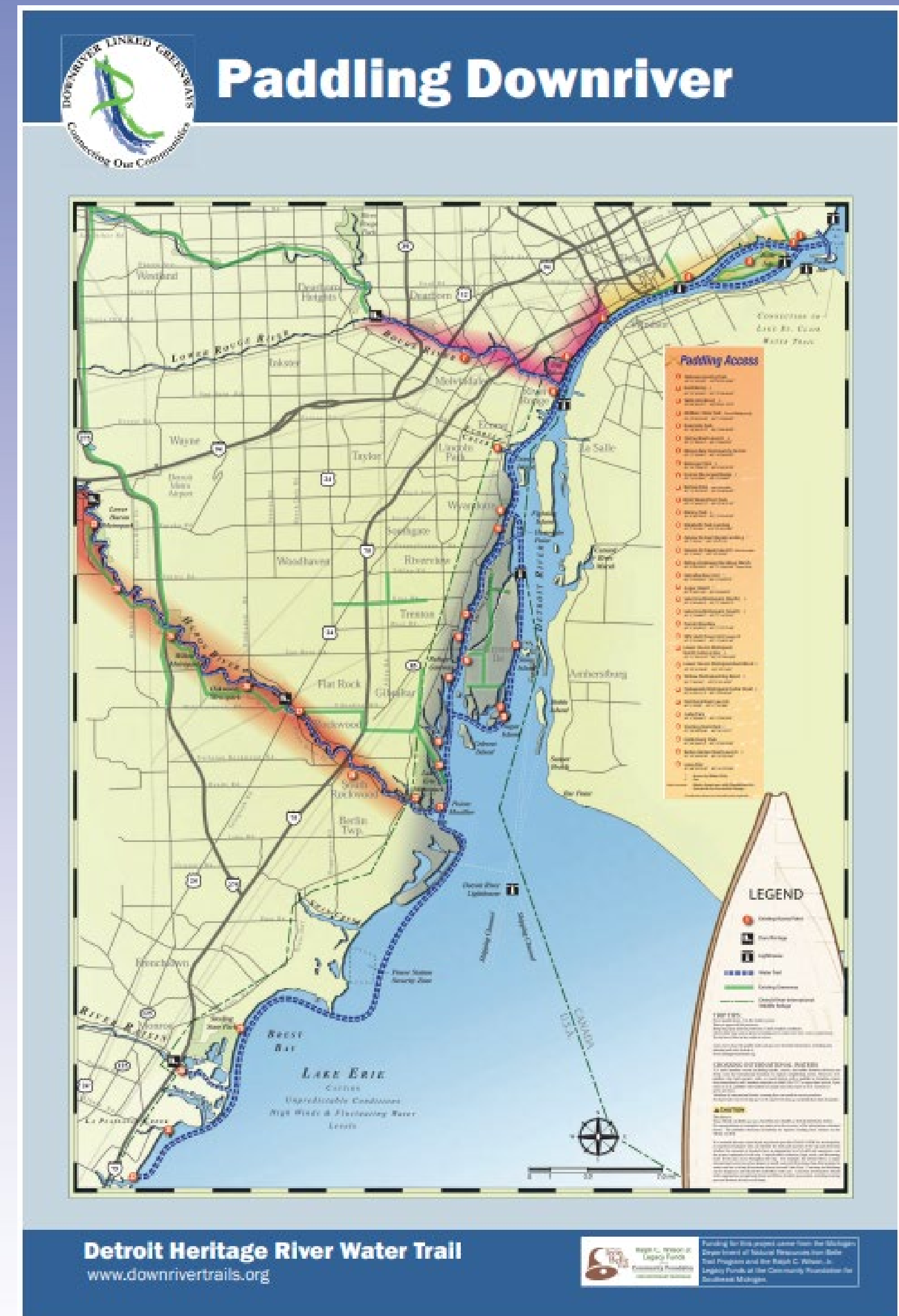
- Outreach to Local Stakeholders
- Improve Bike/Ped Access

Starting Process:

- Built collation with various community and organization stakeholders

Assistance:

- Mediated meetings
- Developing goals and visioning through planning process
- Created objectives, goals and purpose of the group
- Improve relationship with county in terms of transportation improvement projects

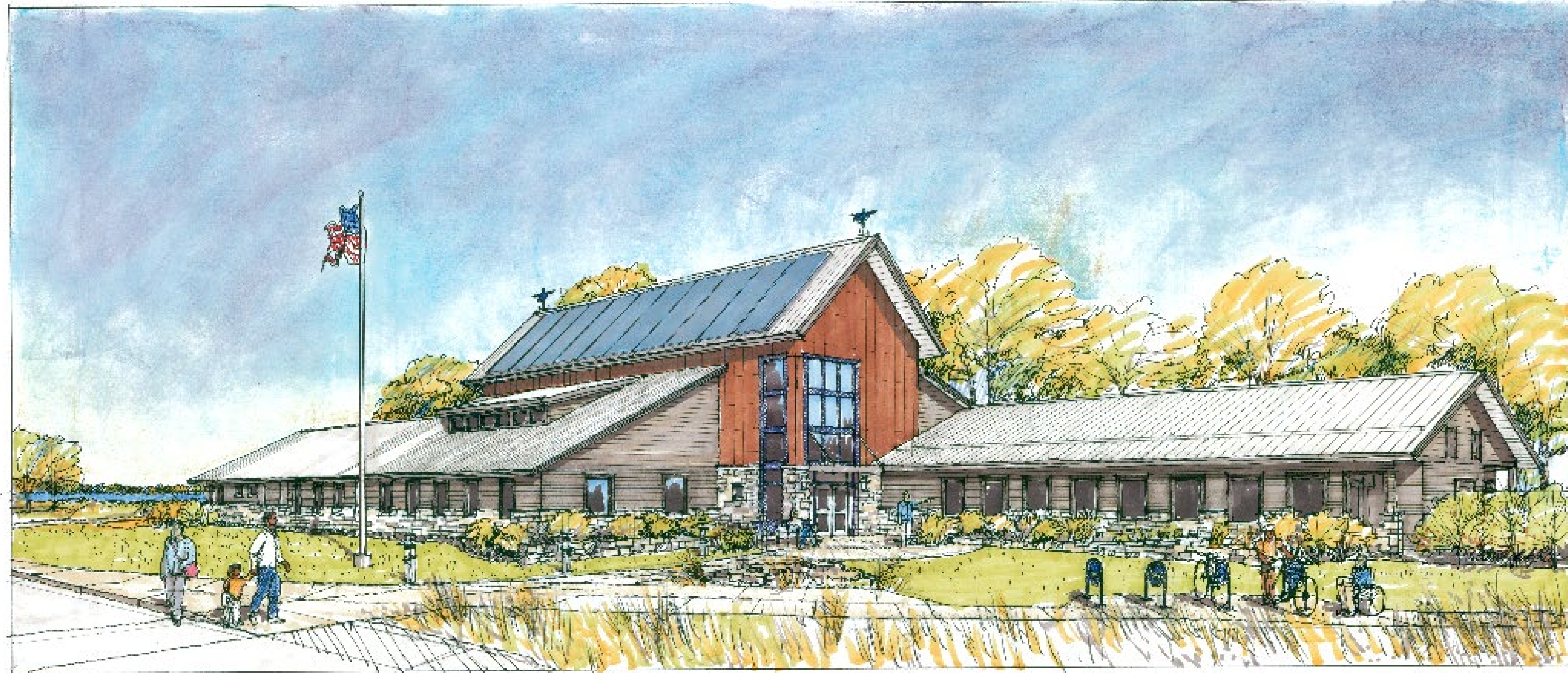


Noteworthy Projects:

Preparation for Opening of the Refuge Gateway

Detroit River International Wildlife Refuge

Trenton, Michigan

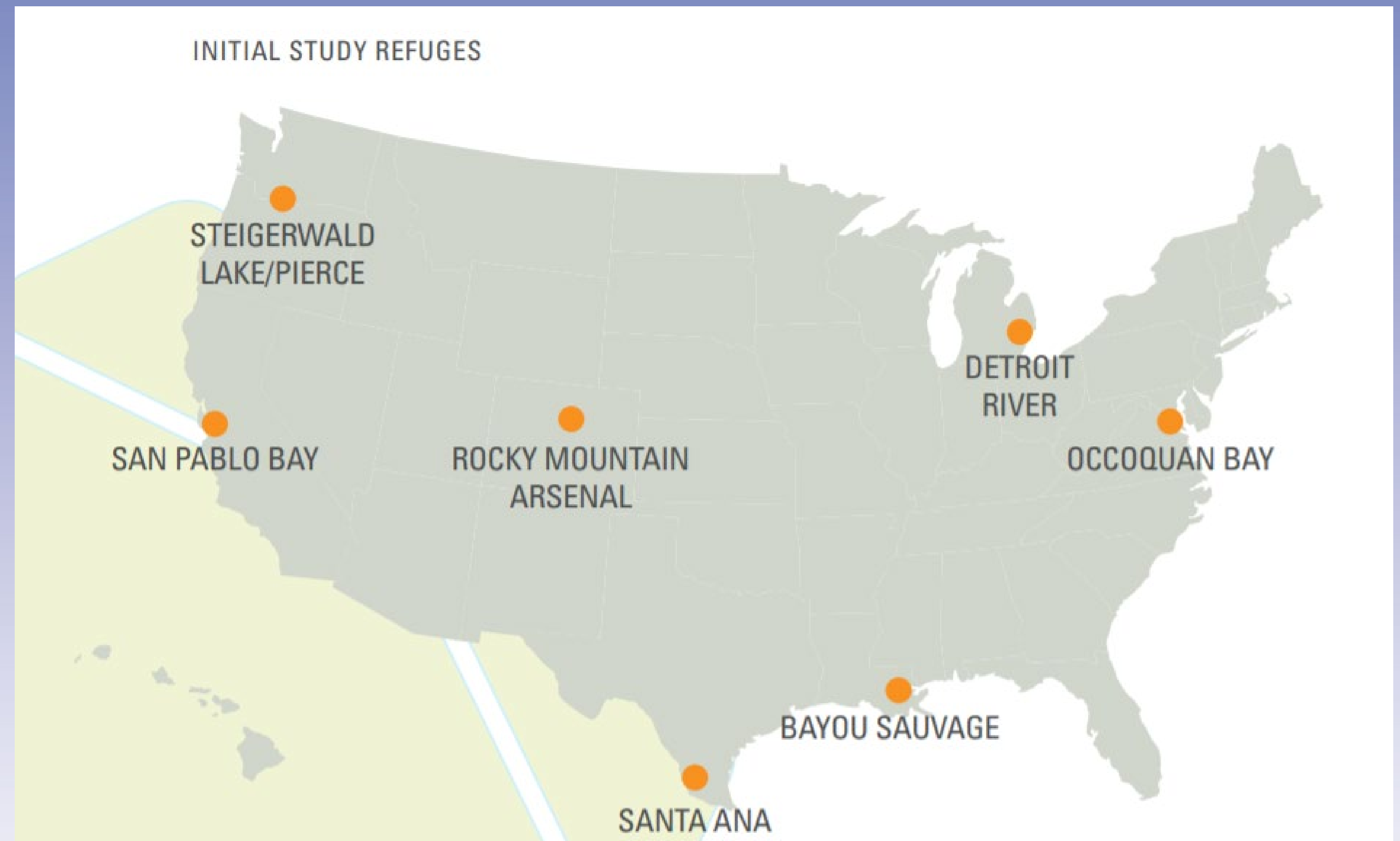
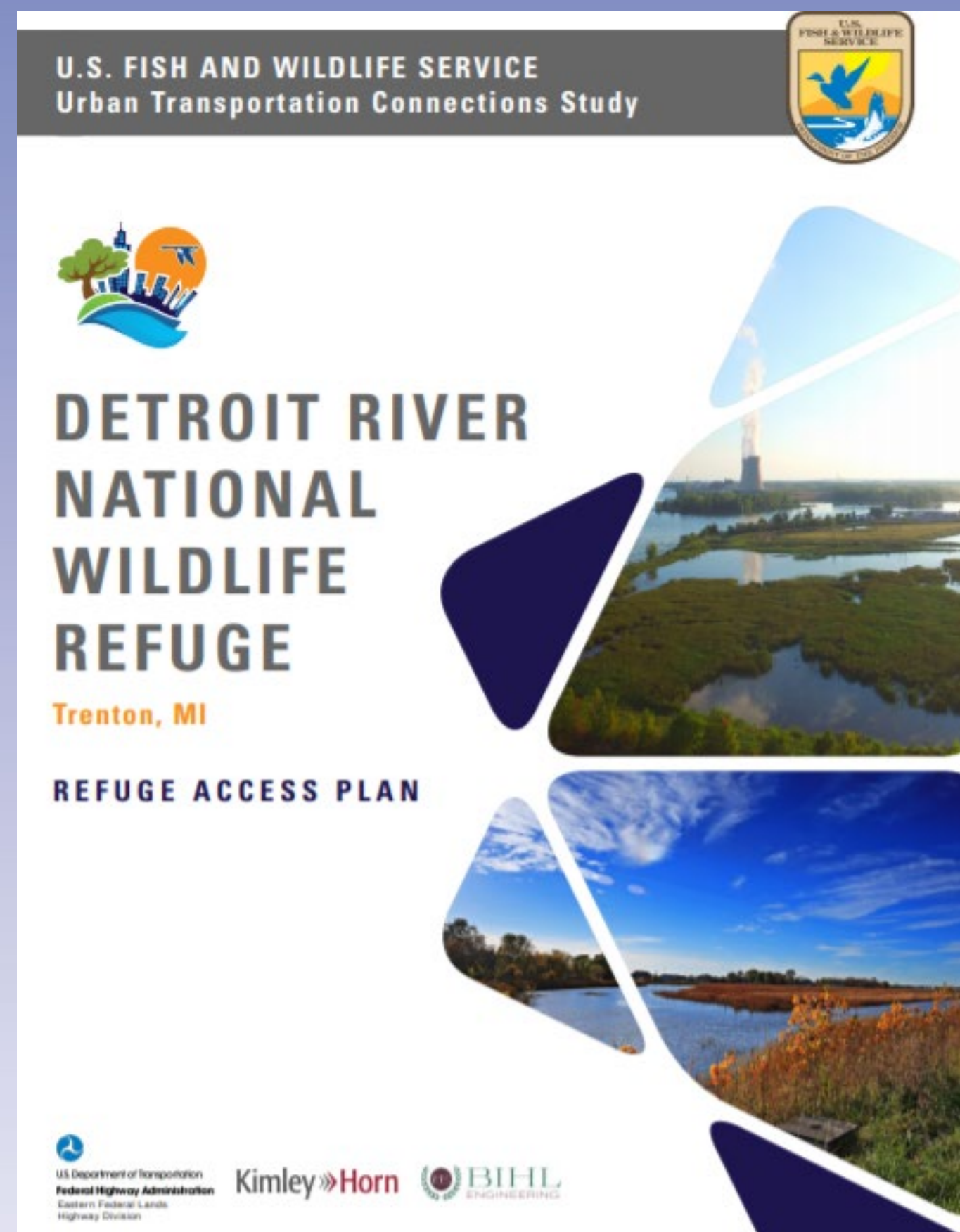


Visitor Center

May 2013



Note Worthy Projects: Refuge Access Plans



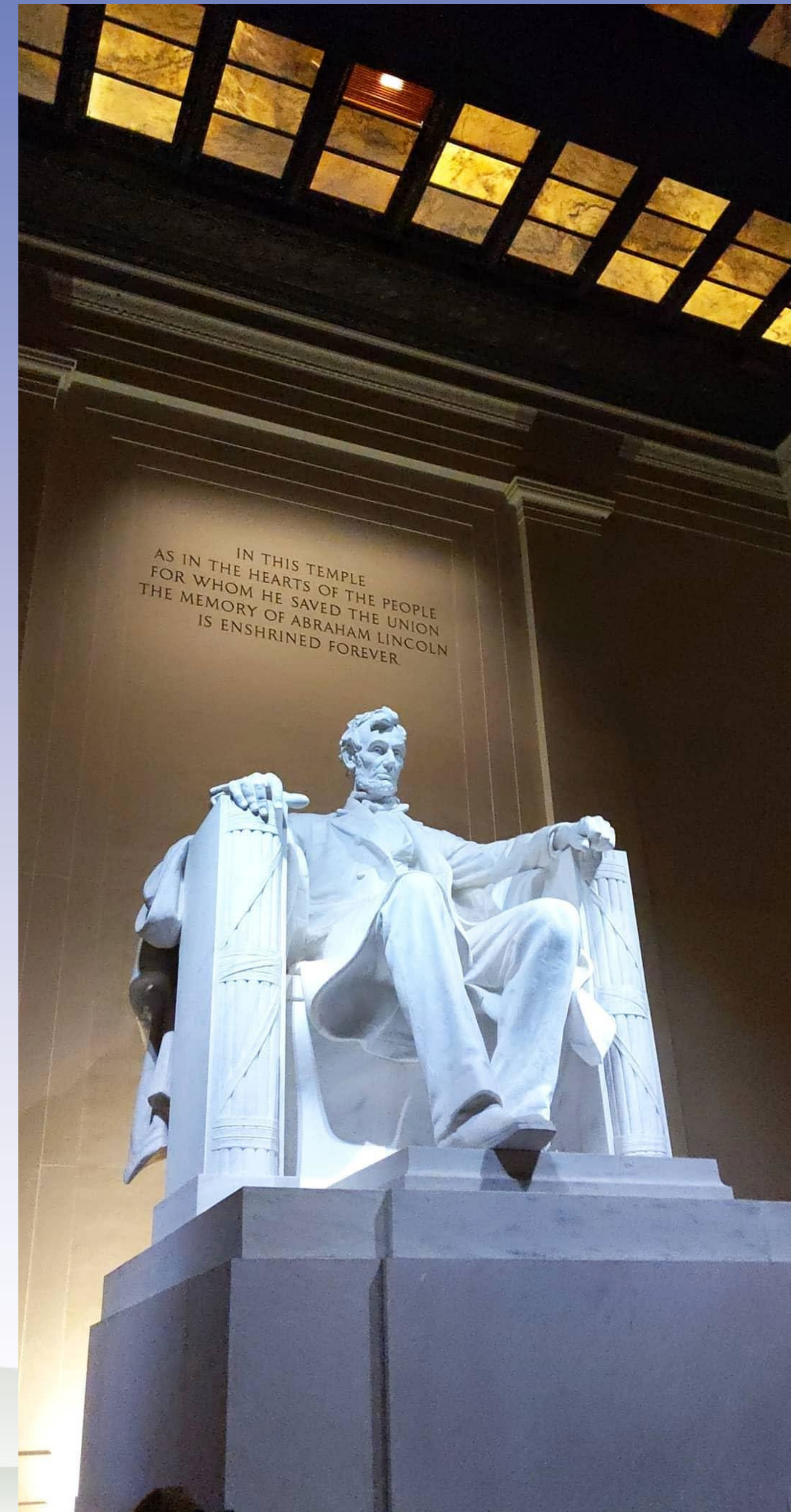
Big Wins

- Aided trail non profit groups get \$1.9 million grant
- Extension of Route 160 SMART Bus to Refuge Gateway
- DRIWR RAP nearly complete
- Improve cooperation between shoreline communities
- Institutionalized transportation planning into refuge-wide management
- Positive contributions to metro Detroit



HQ Rotation- Jan – March 2020

- Refuge Access Plan Project accomplishment tracking
- FWS Trail Inventory Assistance
- Assist with RTC 5 Year Plan guidance
- Following up on John Heniz NWRT Rideshare Program
- Analyzing cost-estimating for transportation projects

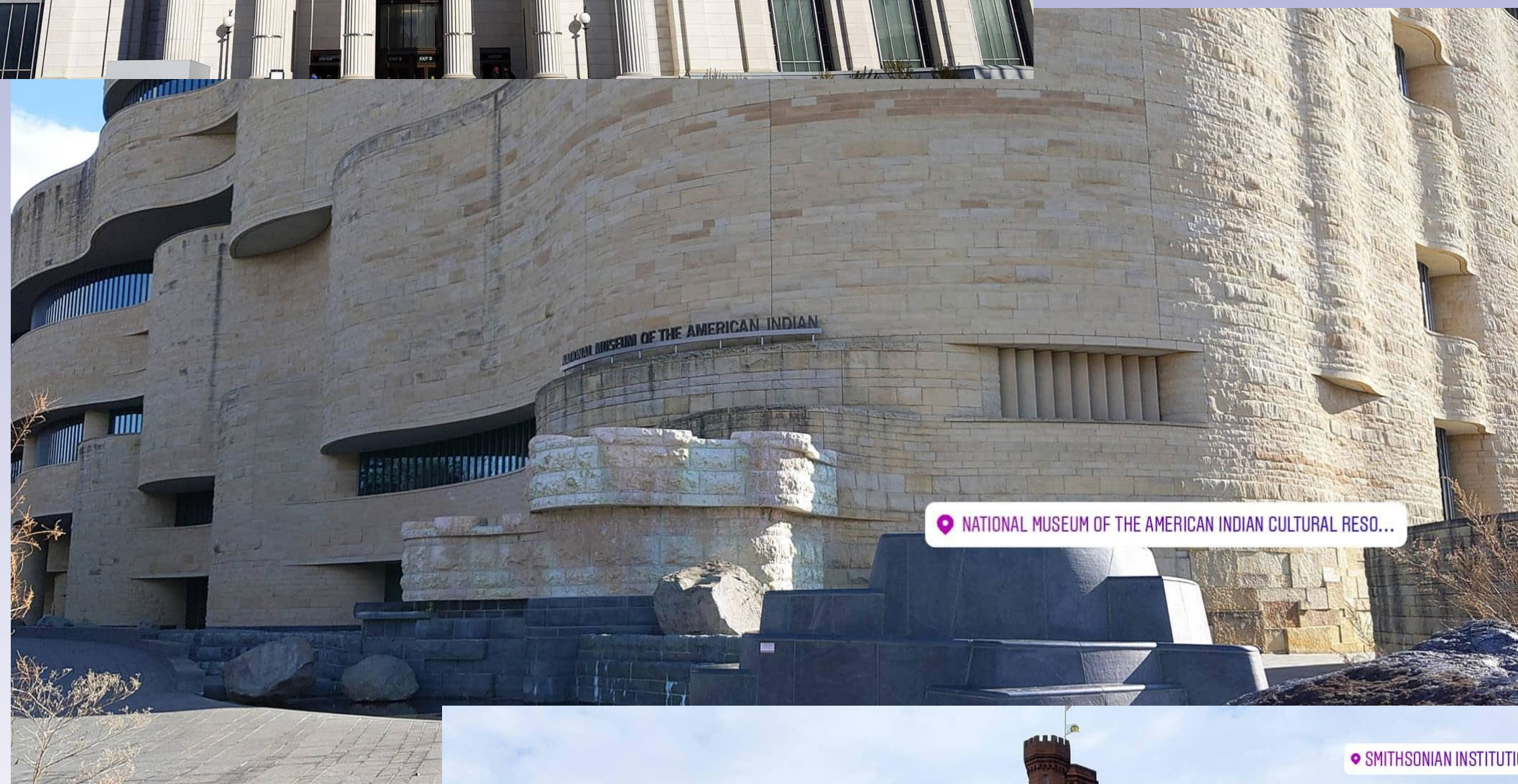
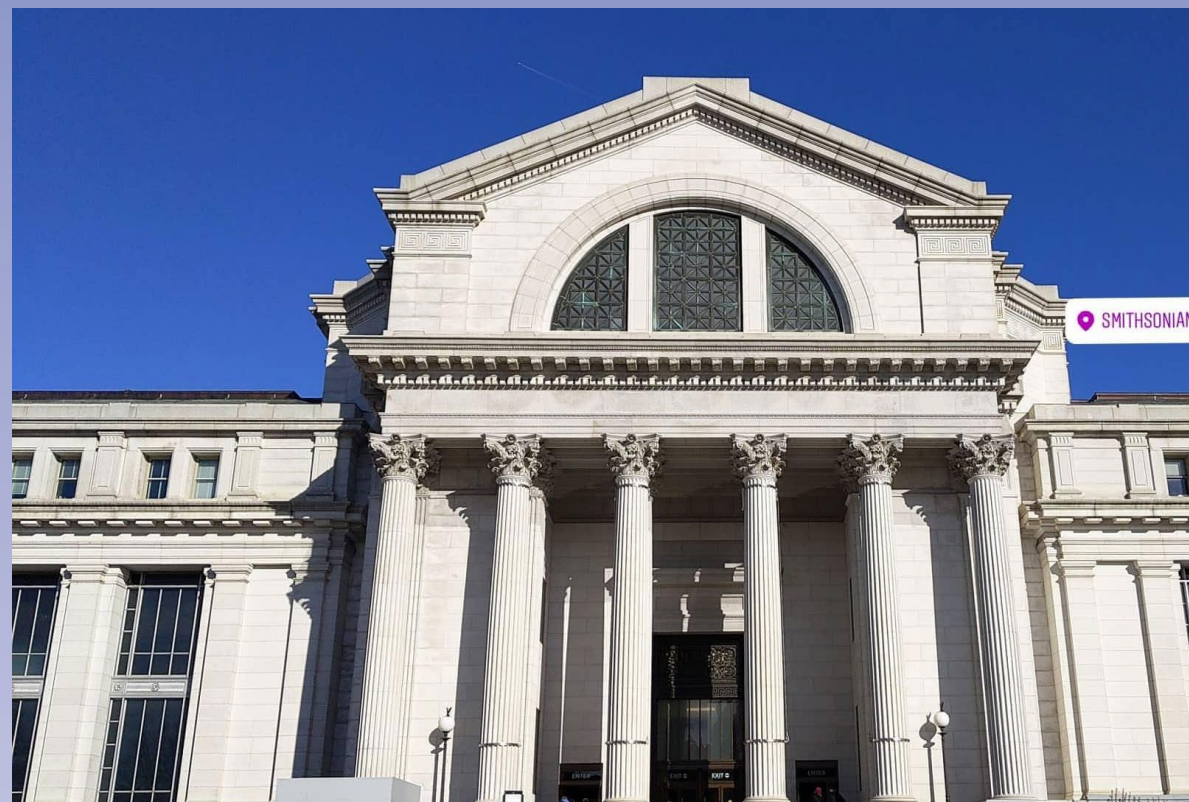


HQ Working Environment

- More impacted by current events on the Hill and White House
- Front line to new policies, legislations and executive orders
- National systemic planning
- Interworking agencies
- FWS branches interconnect on various projects



HQ Takeaways



- Take initiative with Projects
- Talk to FWS and other federal employees
- Explore the work environment and jobs at a national level
- Sit in on meetings
- Visit all those museums and monuments!

Virtual RO Rotation March 23rd – April 10th



- Discussions:
 - RTC 5 Year Transportation Planning
 - ERFO
 - Project development
 - Coordination with other local, state and federal agencies
- Project meetings
 - Big Oaks NWR
 - Swan Lake
- Regional IMD meetings

Photo credit: FWS.gov

Lessons for Future Fellows: Partnerships are Key



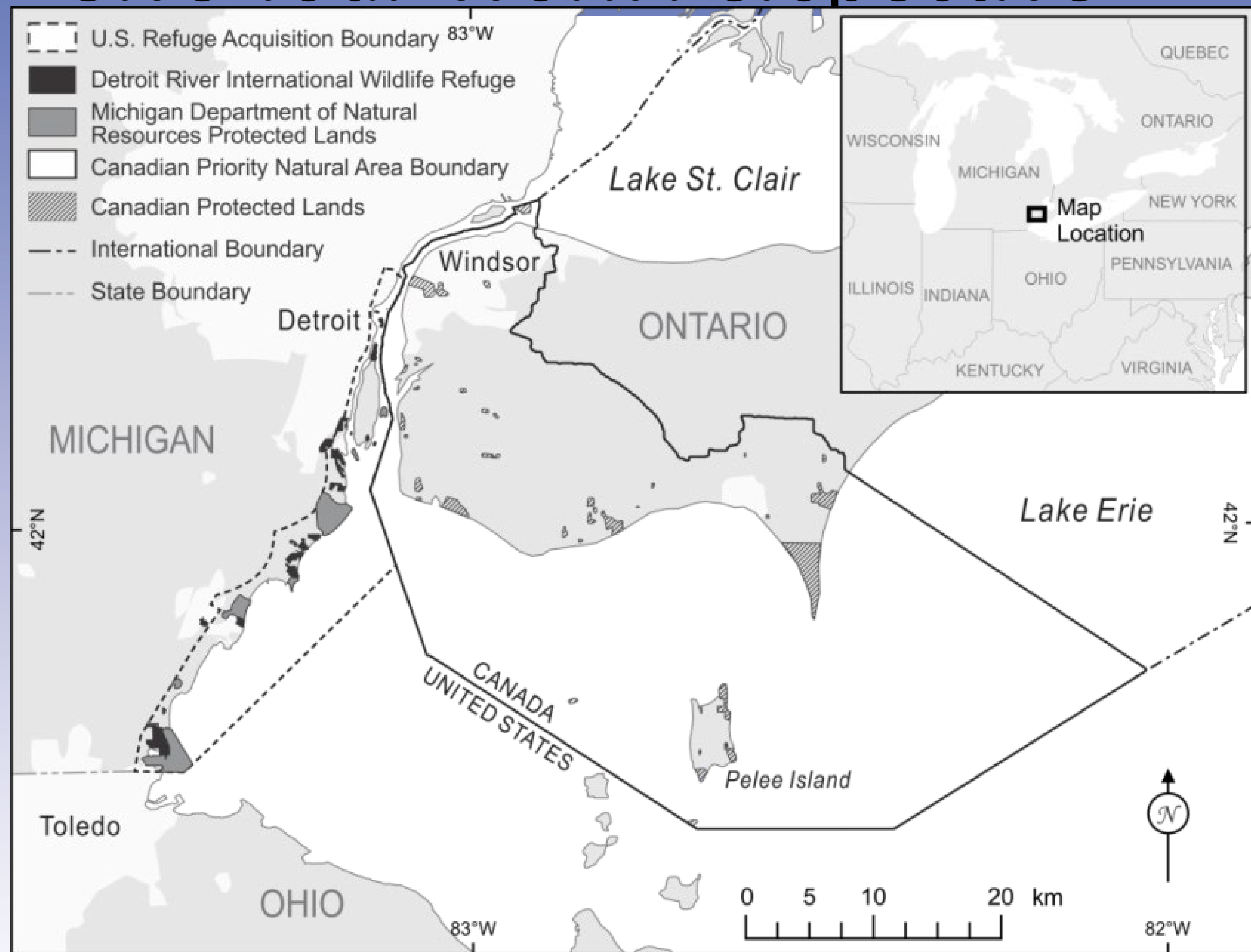
Lessons for Future Fellows: Discovering Tasks

- Inventories...databases....
lists...
- Follow those leads
- Feel free to think outside
the box
- Discussion from staff
- Be a reporter
 - Ask questions!



Photo credit: pixabay.com

Lessons for Future Fellows: Give Your Work Perspective



Lessons for Future Fellows: Enjoy the Experience



Thank you

Including, but not limited to:

- Jody Demeyere, Joann Van Aken and the rest of the DRIWR and IWRA Staff
- Jaime Sullivan (mentor), Phil Shapiro and the WTI Staff
- Current Fellows Naomi Fireman and Nate Begay
- Transportation Team at HQ and Brandon Jutz
- Our local and regional partners, gateway communities, non-profits, corporate and foundational funders and Planners at SEMCOG

Resources

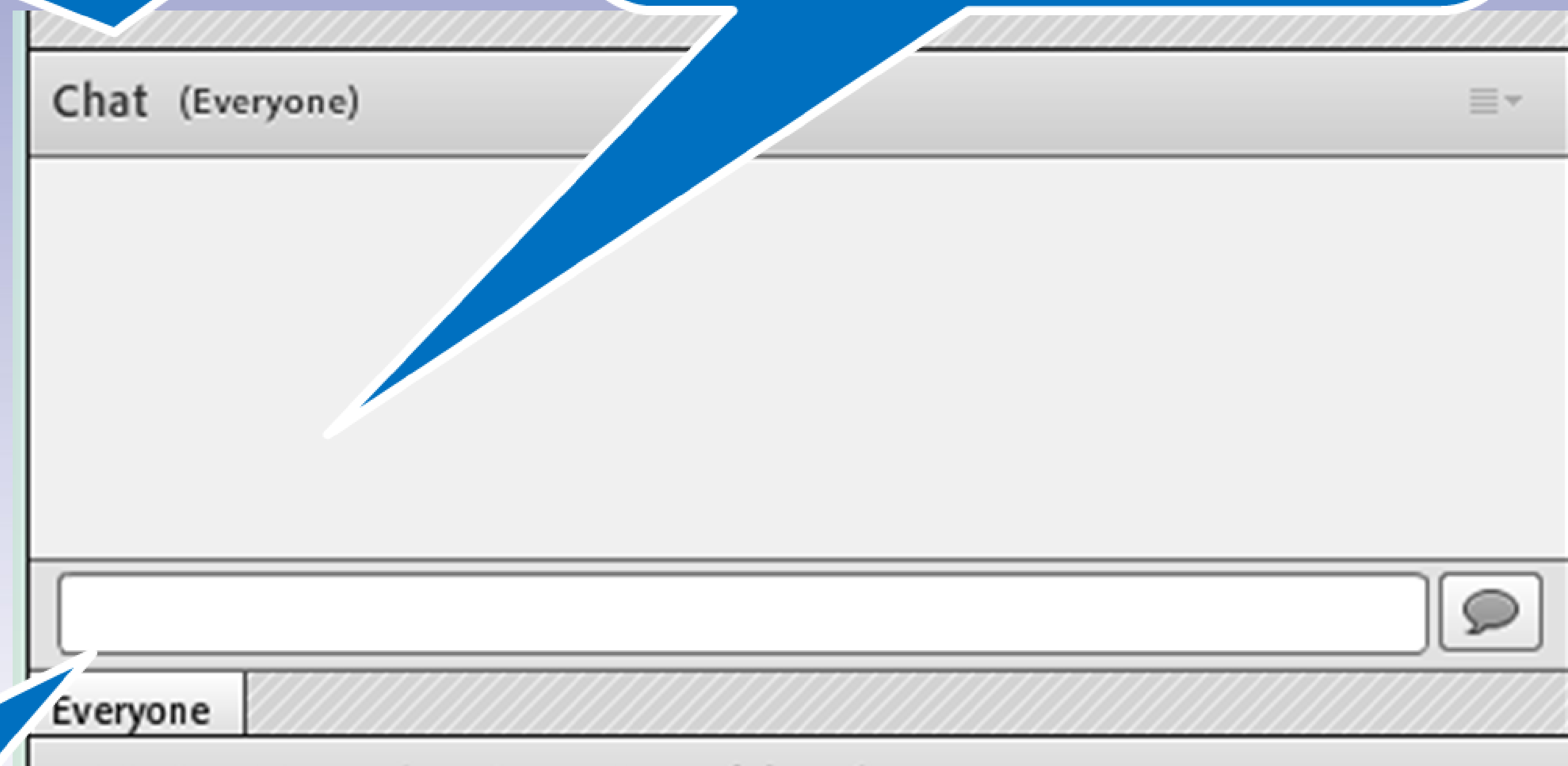
- Safety Signage and pavement marking guide for small town, rural and recreational trails
<http://ruraldesignguide.com/>
- National Summit for Gateway Communities resources and presentations
<https://www.conservationfund.org/our-work/conservation-leadership-network/1978-national-summit-for-gateway-communities>

Directing your Questions via the Chat Pod

1. Chat pod is on left side of screen between attendees pod & closed caption pod

3. Answers will appear here unless addressed verbally

2. Type your question or comment here



Contact Information

If you have any questions related to this presentation, please contact:

*DRIWR Visitor Services Manager at
(734) 288.6458 or Jody_demeyere@fws.gov*

or

*Fellow at
(224) 548-0089 or VinceZiols@gmail.com*

Or contact the PLTF Program Manager at:

(774)571-3505 or jaime.sullivan2@montana.edu

<https://westerntransportationinstitute.org/professional-development/public-lands-transportation-fellows/>