

Community Garden Expansion in the City of Bozeman

Recommendations Based on Case Studies

13 December 2021

SFBS Capstone Presentation

Herrick Hall, Montana State University



Meet the Team



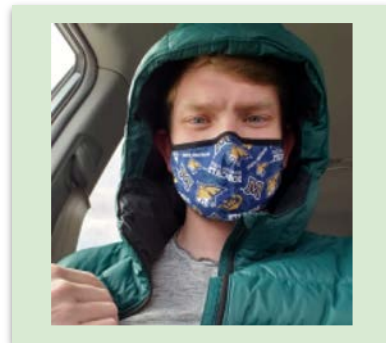
Mary Stein
SFBS Program Leader



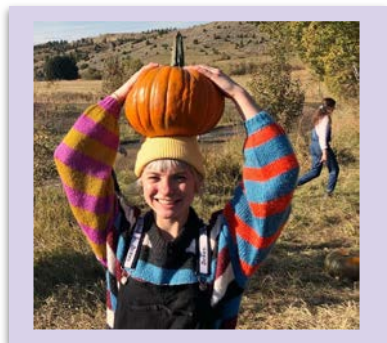
Gracelyn Abel
SFBS - Food Systems



Dylan Halverson
SFBS - Food Systems



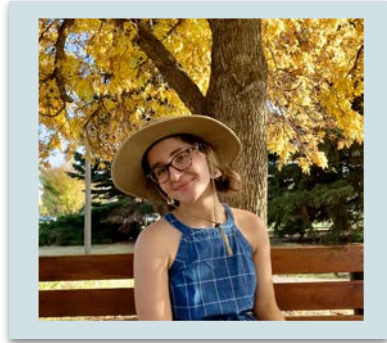
Braedon Lineman
SFBS - Agroecology



Anna McKee
SFBS - Crop Production



Grace Nichols
SFBS - Food Systems



Anna Parreira
SFBS - Crop Production



Gavin Usher
SFBS - Food Systems

What is a community garden?



Benefits of Community Garden Programs

Greater consumption of fruit and vegetables.

Increased food access.

Promotion of positive mental health,
physical health and general resilience.

Strengthened interpersonal connections.

Aesthetic appeal.

Bozeman Community Garden Program Challenges



Expansion



Staffing



Agroecology



Community
Awareness

Healthier gardening management, such as soil building practices.

Access to educational resources for new gardeners.

Promotion of community among gardeners.

Community Gardener Interviews



Case Study Research



Garden City Harvest
Missoula, MT



P-Patch
Seattle, WA



HPEC Community Garden
Loveland, CO

Missoula, MT Case Study
Key Takeaways:

Diversified Models

Adequate Staffing

Collaboration with City

Education Resources

Marketing + Branding



A program managing 20+ farms and gardens in Missoula, MT.



The organization includes community garden, farm to school, neighborhood farms, and youth development.

The High Plains Environmental Center has a goal to teach agricultural skills on a small scale for prospective gardeners.



Community garden boxes are free to HPEC and community residents.



Loveland, CO Case Study
Key Takeaways:

Committee style garden staffing

Volunteer incentives

Demonstration gardens

Volunteer requirements

Non-profit funding

Seattle, WA Case Study

Key Takeaways:

Diversified Models

Unique community staffing

Expansive accessibility and inclusion, specifically for Black, Indigenous, and people of color

Donation + collaboration with local food resources



Seattle's first community garden started in 1973 located on farm land owned by the Picard family.

The Seattle community garden program provides safe spaces for new and experienced gardeners to connect and share ideas.



Uniting Themes Among Our Case Studies:

Diversity of organizational structures

Targeting limited resource gardeners

Portfolio of garden types

Strong partnerships to meet program needs

Education resources

Online connection and centers of information

Community building strategies

Recommendation Categories

Organizational Structure and Operations

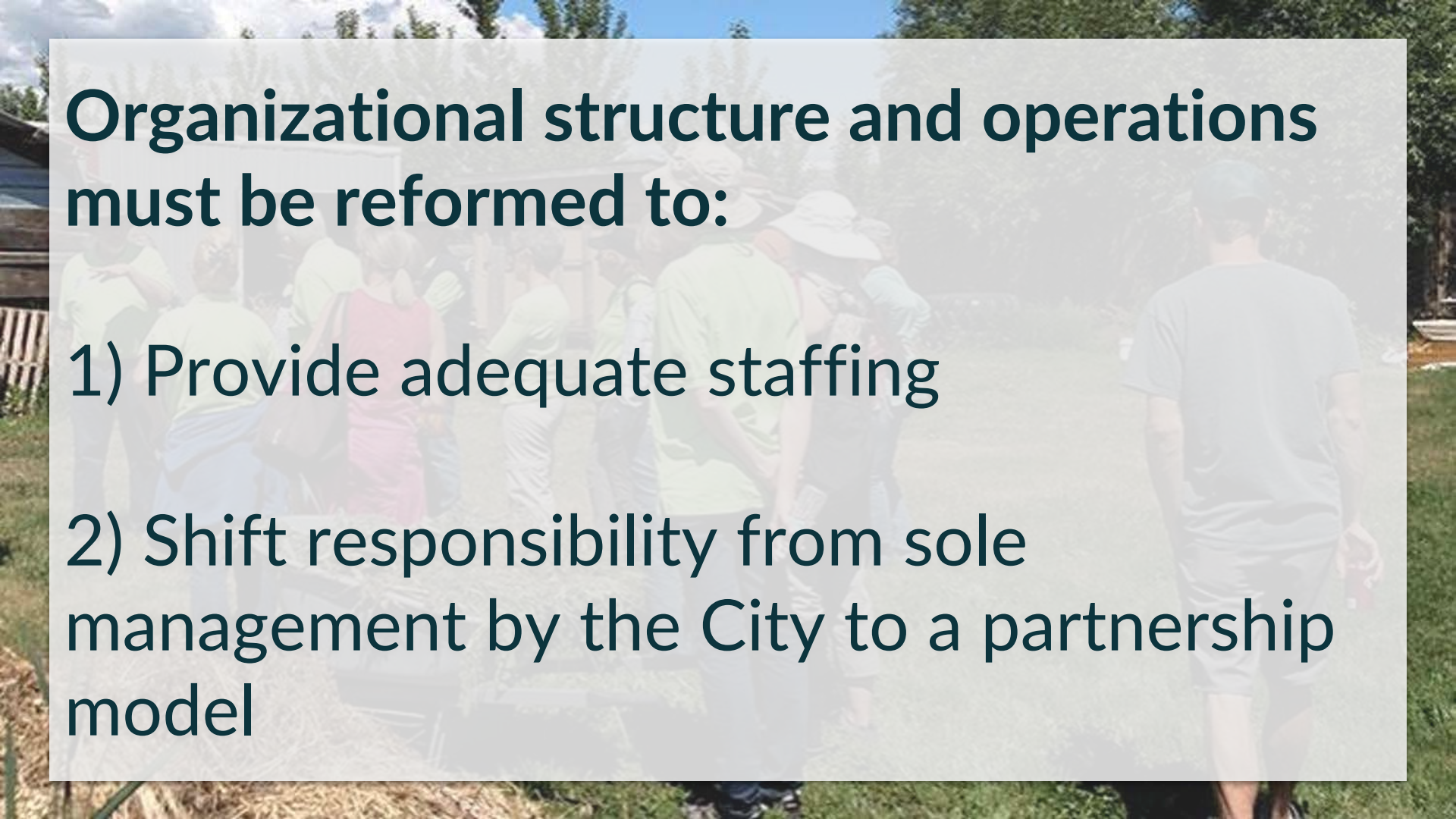
Partnerships

Models and Approaches

Messaging and Branding

Education Resources



A group of people, some wearing high-visibility vests, are gathered outdoors in a grassy area. The scene is slightly blurred, suggesting a candid moment. The text is overlaid on this background.

Organizational structure and operations must be reformed to:

1) Provide adequate staffing

2) Shift responsibility from sole management by the City to a partnership model

Staffing

Full-time
Director

Seasonal
Full-time
Assistant

Seasonal
Part-time
Intern

Seasonal
Apprentice

A background image of a community garden with raised beds, a person working, and various gardening tools and containers.

The community garden program must be supported by a diverse panel of partnerships with regards to:

1) Funding

1) Operations

Types of Partnerships

Funding Partners

Groups and individuals who financially support community garden programming.

Giving of regular donations.

Local Banks
Individual Donors
Building Developers

Local Retailers/Grocery
Grant Programs
City of Bozeman

Operations Partners

Groups whose direct involvement support programming.

Giving of time, space, and knowledge.

Farm to School Programs
University Groups
School Districts

Volunteers
Master Gardeners
HRDC



A variety of models and approaches are necessary for:

1) Gardener accessibility

1) Program expansion

1) Fulfillment of community needs

Variety of Approaches

Location Models



Hospital Gardens



Raised Beds



Rooftop Gardens



School Gardens



Private Land-Shares

Purpose Models



Communal Gardens



Rented Plots



Demo Gardens



Perennial Plots

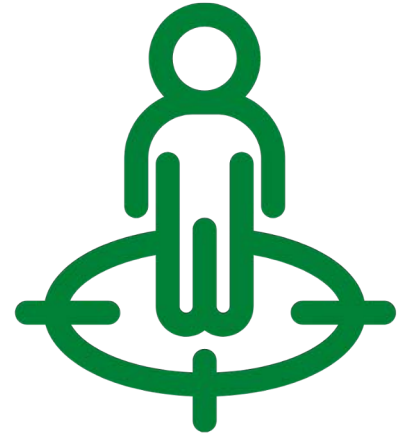



Seed-Saving

Target Demographics



HRDC
BUILDING A BETTER COMMUNITY



A person wearing a wide-brimmed hat and a light-colored shirt stands in a field of bright yellow flowers. The background shows a clear blue sky and some green foliage. The entire scene is overlaid with a semi-transparent white rectangle containing text.

Messaging and branding must be an investment made in order to promote **community awareness** of the program and its goals.

Examples of Signage and Branding



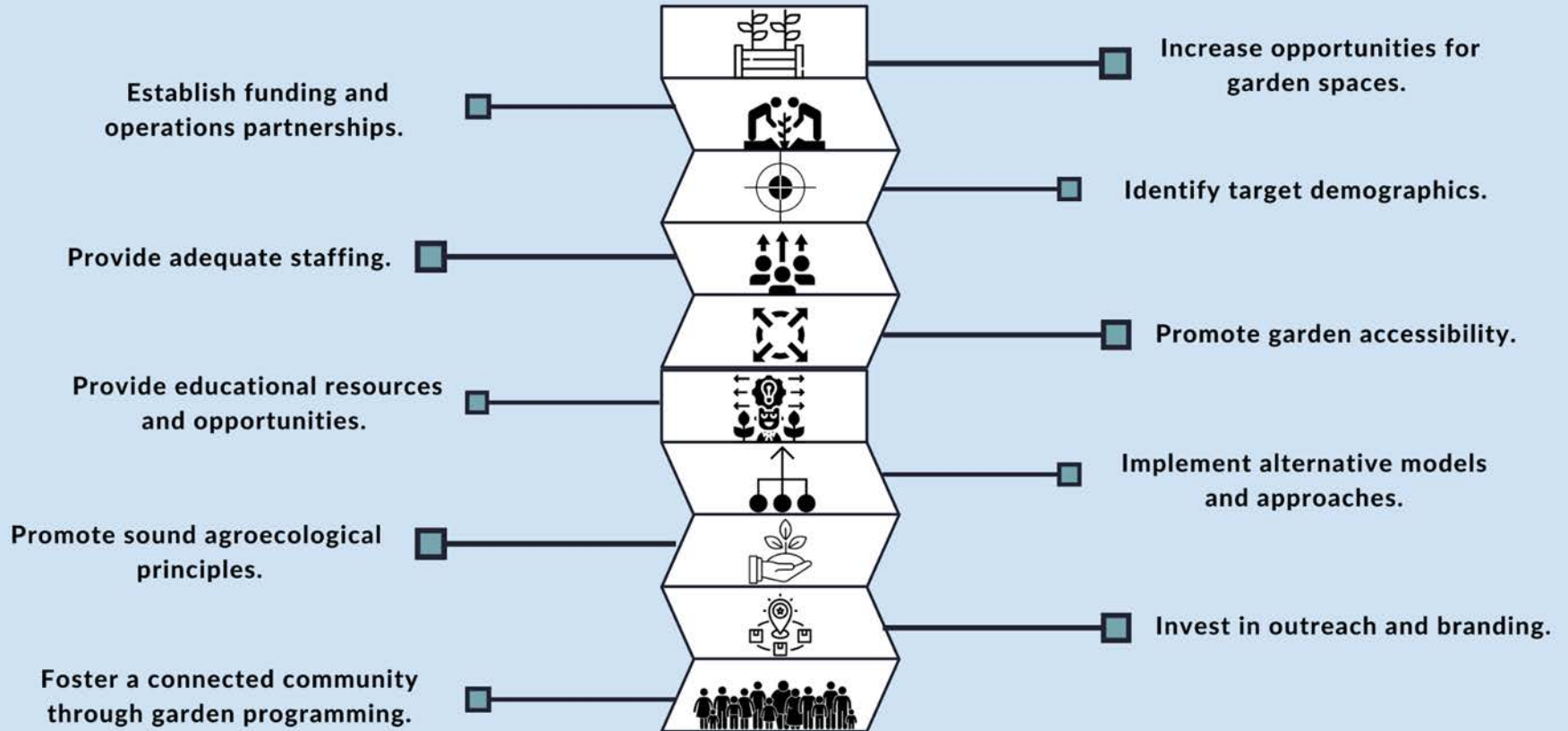
Locally, Sustainably and Educationally Grown





Gardeners and program administration
must have access to **educational
resources.**

10 Recommendations for the City of Bozeman Community Garden Program



Our deep gratitude goes out to...

Bozeman Community Gardeners (Barbara, Pam and Luke)

Kelley Jazdzewski, City of Bozeman, Parks Division

Susan Gallagher, CATS Initiative, Western Transportation Institute, MSU

Garden City Harvest Staff, Missoula, Montana

P-Patch Program Staff, Seattle, WA

High Plains Environmental Center Staff, Loveland, CO

Faculty, administrators and staff of Montana State University SFBS Program