

RADON POISONING

The Invisible and Scentless Gas



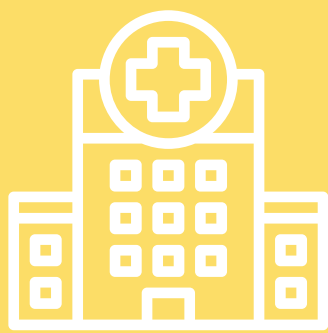
Radon is a radioactive gas

Produced by the natural breakdown of uranium in soil and water, this substance is found worldwide and is even a risk here in Bozeman!



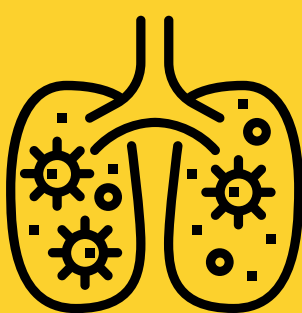
Radon moves through the foundation of buildings

The small particles can get trapped in buildings and become heavily concentrated. This can be especially true in the lowest level of a home!



Radon is the leading cause of environmental cancer in the US

Radon exposure results in 20,000 lung cancer deaths per year! It is the leading cause of lung cancer in nonsmokers.



Is radon a concern in my community?

The EPA recommends levels be below 4.0 picocuries per liter. Elevated radon in homes is common in Montana. In Gallatin County, 37% of homes tested have unsafe levels of radon.



How do I test for radon in my home or rental?

Low cost test kits can be bought from many retailers as well as from the local health department (www.healthygallatin.org/environmental-health/air-quality/radon/).



What do I do if levels are too high?

Radon levels can be reduced with ventilation systems or foundation fixes that are relatively inexpensive! Contact your landlord and work with an expert to lower those levels.

For more on Radon:



Check the EPA website at www.epa.gov/radon for more great information and resources.

You can also reach out to the Gallatin County Health Department at healthygallatin.org