

Students were tasked with analyzing and communicating public input for the Gallatin Valley Sensitive Lands Protection Plan (mailed survey, public link survey, open-house).

They are presenting these outputs today!

# Gallatin Valley Sensitive Lands Protection Plan

Week 8: Tuesday, March 7, 2023



**GPHY**  
Geography

**365**  
Geographical Planning

What We Heard

The graphic features a stylized landscape with a blue river flowing through a valley. In the background, there are snow-capped mountains, a sun, and birds flying in the sky. A barn is visible in the middle ground. The foreground shows a white fence and a utility pole. The text 'GPHY Geography' and '365 Geographical Planning' is positioned at the top, and 'What We Heard' is in a black speech bubble pointing to the river.



Sarah P. Church, PhD  
Traphagen 217  
sarah.church@montana.edu  
@SPCplanning

**THANK  
YOU!**

**TO OUR GUESTS!**



**Ali Chipouras**  
*City of Bozeman  
Sustainability Specialist*



**Kristina Kachur**  
*Logan Simpson  
Senior Associate Environmental Planner*



**Susan Gallagher**  
*Western Transportation Institute  
Education & Workforce Program Manager*

# What We Heard

## *Presentations*

- 2-minutes per person to present
- 5-minutes per group for questions/feedback
- Group order:
  - Group 6 (Carson, Hayden, Sam B., River)
  - Group 2 (Mitchell, Jeremiah, Rebecca, Berry)
  - Group 4 (Sam S., Xiaosi, Zach)
  - Group 5 (Alex, Alfred, Forest, Mirabelle)
  - Group 1 (Dillon, Ellen, Ian, Taylor)
  - Group 3 (Jonas, Kevin, Spencer)

# Protecting Wildlife Biodiversity

25%



Of feedback notes mention protecting native plants and forests

This summary contains feedback obtained from the Gallatin valley sensitive lands open house about wildlife biodiversity

Of 20 sticky notes of feedback

4

Notes mention floodplain and wetlands

2

Notes mention adding or protecting corridors

1 in 5

comments mention broadening the scope of animals being analyzed



## Some significant comments

What areas do you consider to be sensitive lands for wildlife and biodiversity?

“Cottonwood forests”

“Conifer encroachment”

“Floodplain protection”

“Wetland preservation”

“Existing tree corridors”

“Think pollinators”

“Channel migration easements”

“Unconverted native plains and forests”

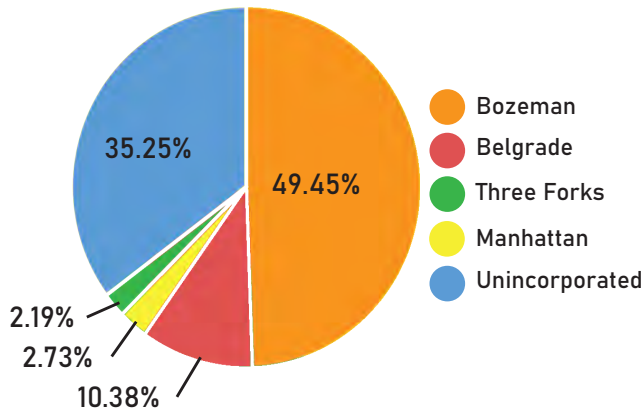
For more info go to [gallatinvalleyplan.bozeman.net](http://gallatinvalleyplan.bozeman.net)

This input will inform which data is included in the model used to identify sensitive lands in the project study area

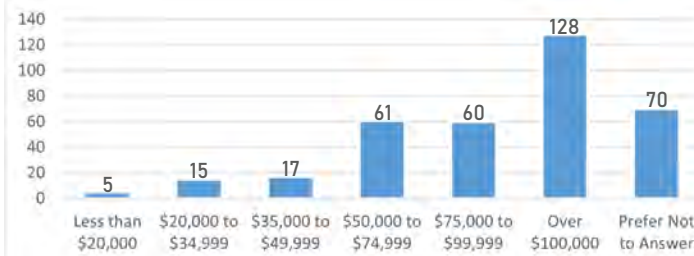
# DEMOGRAPHICS

From the Gallatin Valley Sensitive Lands Protection Plan  
Statistically Valid Survey

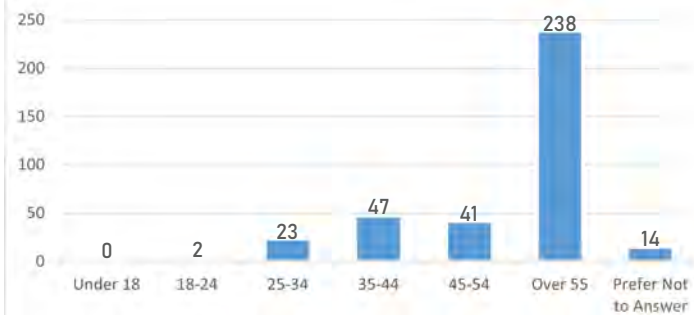
Survey: Where are you from?



Survey: Income



Survey: Ages

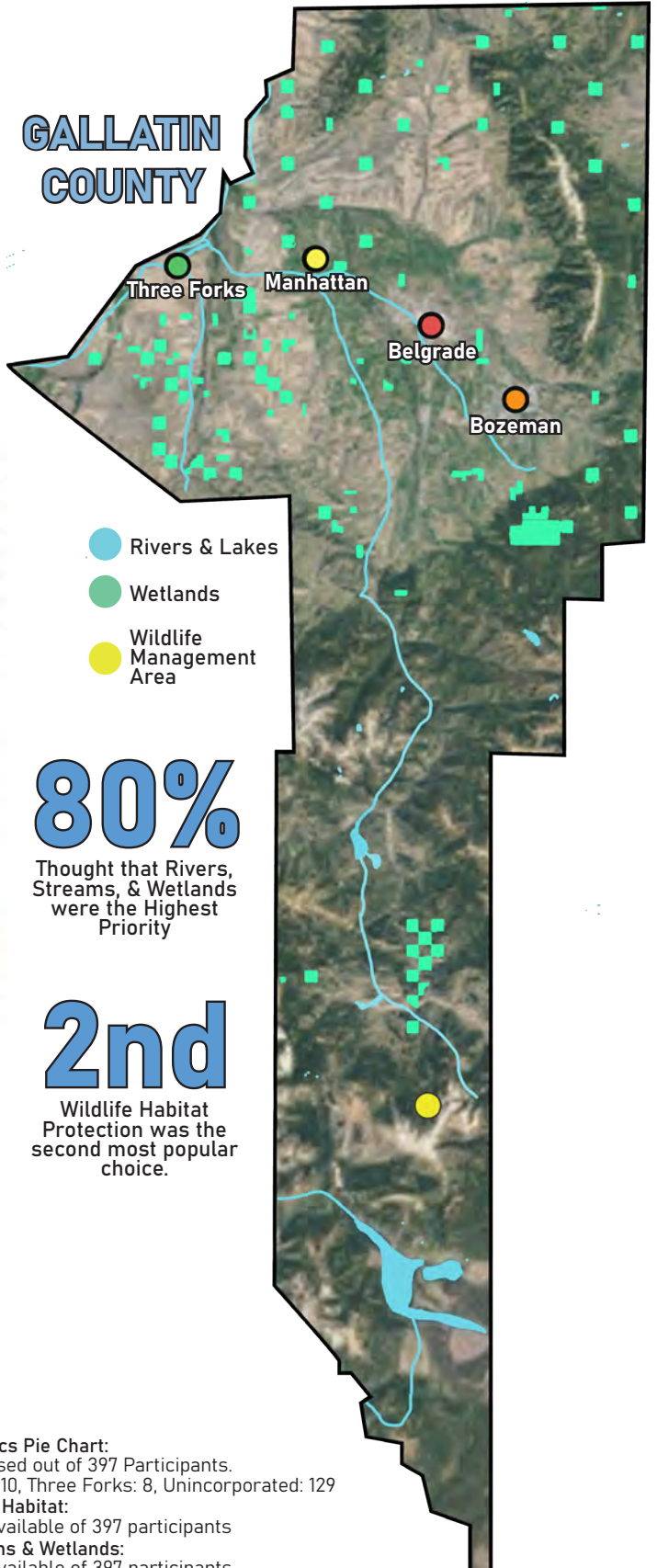


Median Household Income

**\$76,208**

Median Age

**33.4 Years**



**80%**  
Thought that Rivers, Streams, & Wetlands were the Highest Priority

**2nd**  
Wildlife Habitat Protection was the second most popular choice.

**Demographics Pie Chart:**

A total of 366 responses used out of 397 Participants.  
Bozeman: 181, Belgrade: 38, Manhattan: 10, Three Forks: 8, Unincorporated: 129

**Wildlife Habitat:**

A total of 366 responses available of 397 participants

**Rivers, Streams & Wetlands:**

A total of 364 responses available of 397 participants

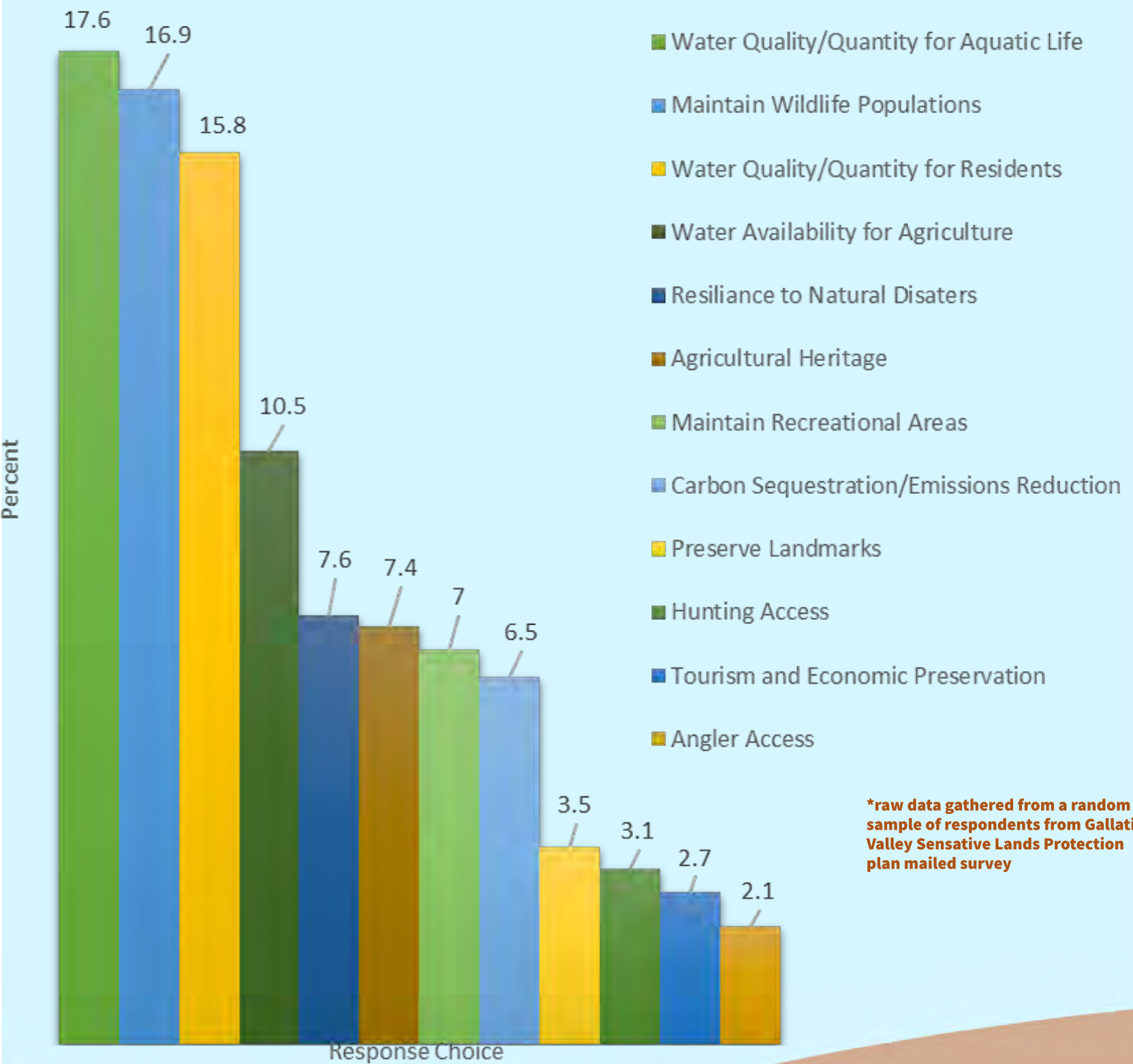
**Medians:**

Data taken from a 2021 Census

# Why is Sensitive Land Protection Important to the Gallatin Valley?



Popularity of Responses by Percent (n=397\*)



\*raw data gathered from a random sample of respondents from Gallatin Valley Sensitive Lands Protection plan mailed survey

## Key Takeaways

-Water for aquatic life, wildlife populations, and water for residents were the 3 most popular responses

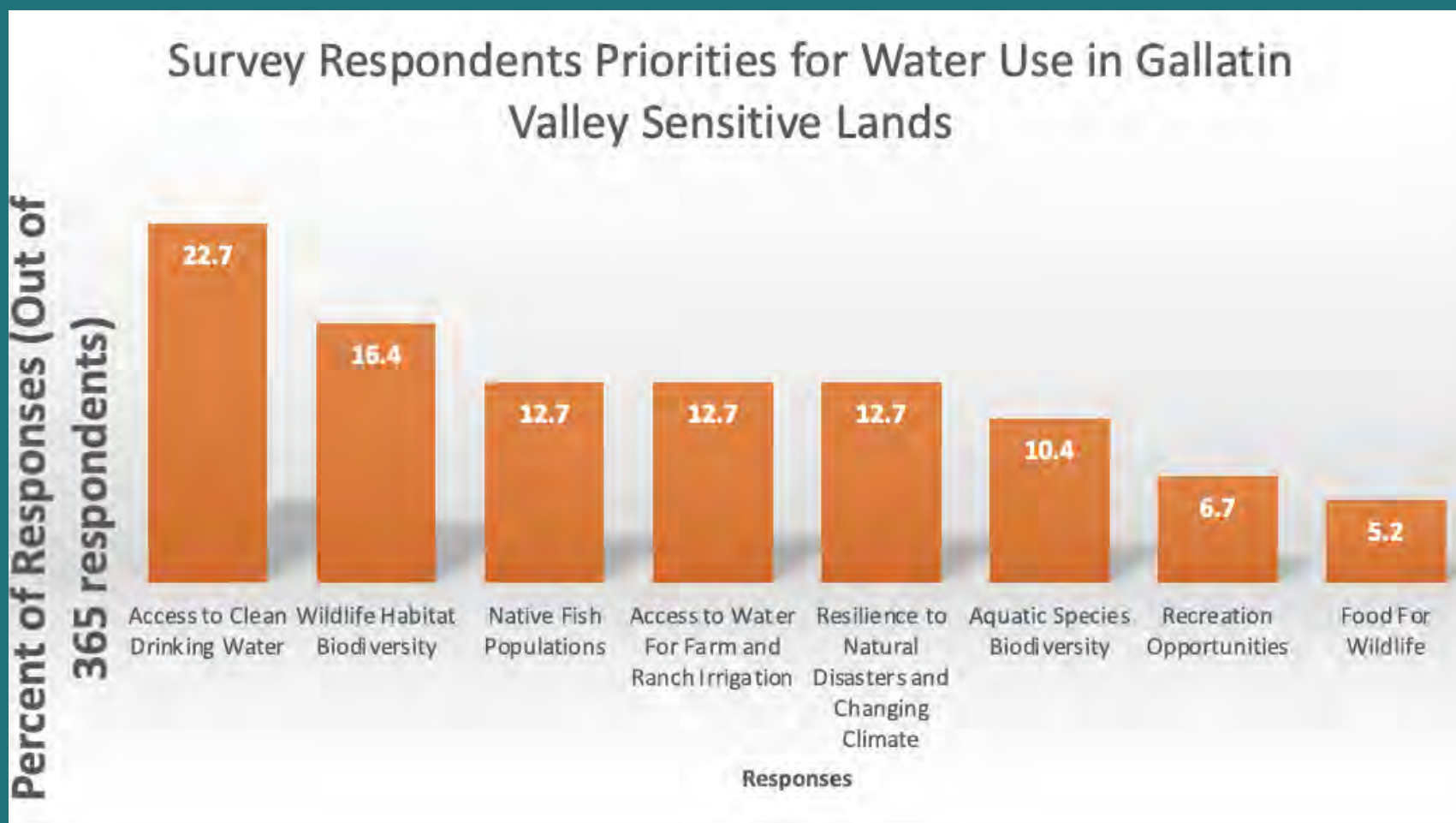
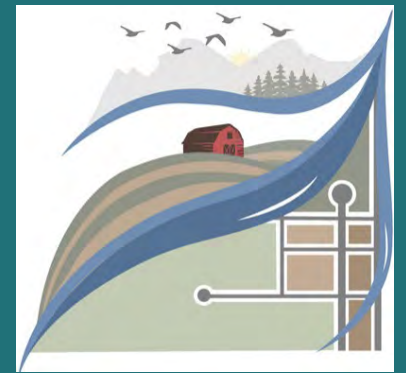
-Angler access, tourism, and hunting access were the 3 least represented responses

-Total of 397 respondents

-This public input will be used to narrow the scope of what is protected

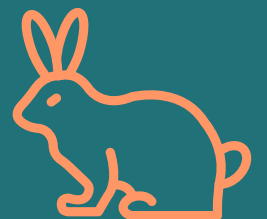
-More information can be found at [gallatinvalleyplan.bozeman.net](http://gallatinvalleyplan.bozeman.net)

# Water Features in Gallatin County



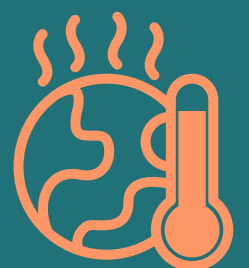
## Priorities

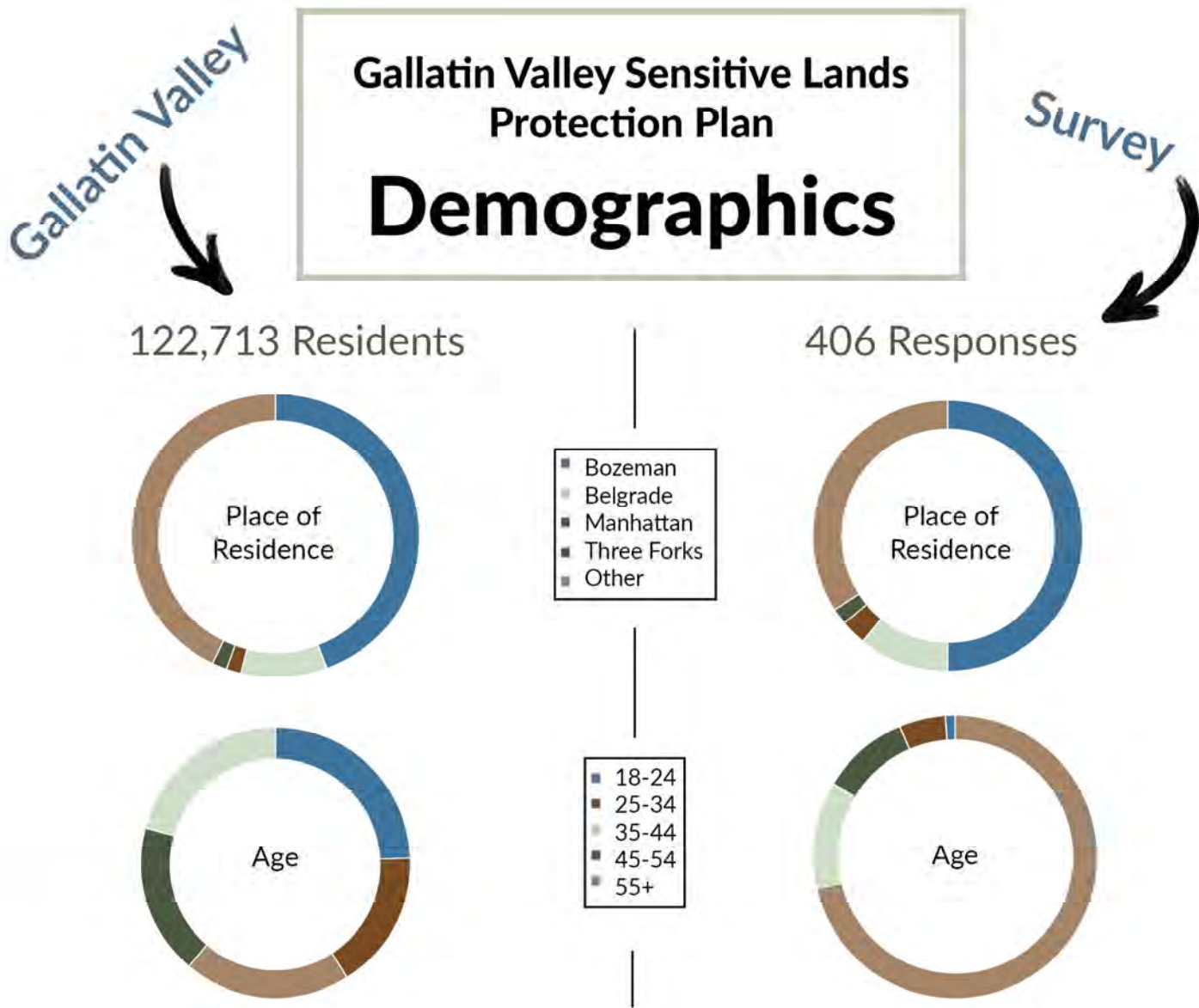
Priorities include drinking water, animal habitats, water for farm use, water for native fish, and resilience for natural disasters and climate change.



## Low Priorities

Respondents didn't prioritize aquatic biodiversity, food for wildlife and recreation opportunities.

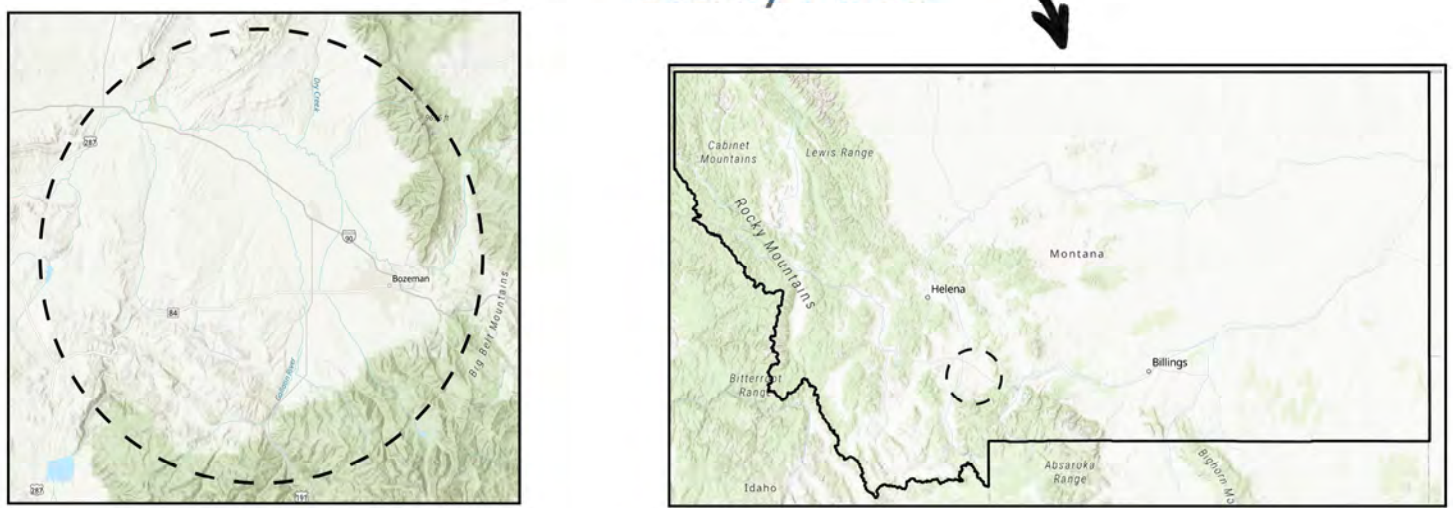




The survey respondent's places of residence aligned well with that of Gallatin Valley as a whole, although the age distribution was strongly skewed, with a larger proportion of older people who participated in the survey. Figures were created using census data and Gallatin Valley Sensitive Lands Survey data.

This information will be utilized to inform decisions around what will be included in the sensitive lands model for the study area.

**Study Area**



For more information visit <https://gallatinvalleyplan.bozeman.net/>



# Sensitive Land Survey Results



GALLATIN VALLEY  
SENSITIVE LANDS  
PROTECTION PLAN

*Connecting our Landscape, Heritage, and Future on Common Ground*

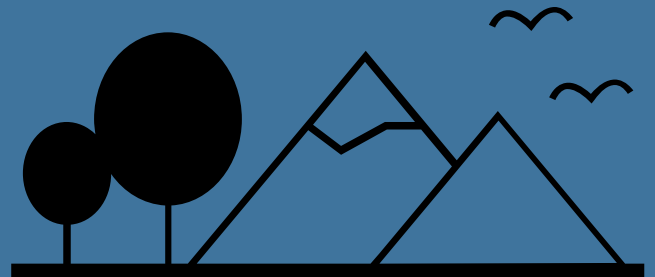
## Recreational and agricultural land use

### Why is sensitive land protection important?

Out of 394 responses to statistically valid survey

33% selected recreational activities and spaces (including hunting and fishing) as one of their top three reasons

52% selected agricultural availability and agricultural heritage as one of their top three reasons



### Why protect wetlands, lakes, streams, and rivers?

Out of 394 responses to statistically valid survey

15% selected recreational activities (fishing, rafting, etc.) as one of their top three reasons

31% selected water access for agricultural use as one of their top three reasons

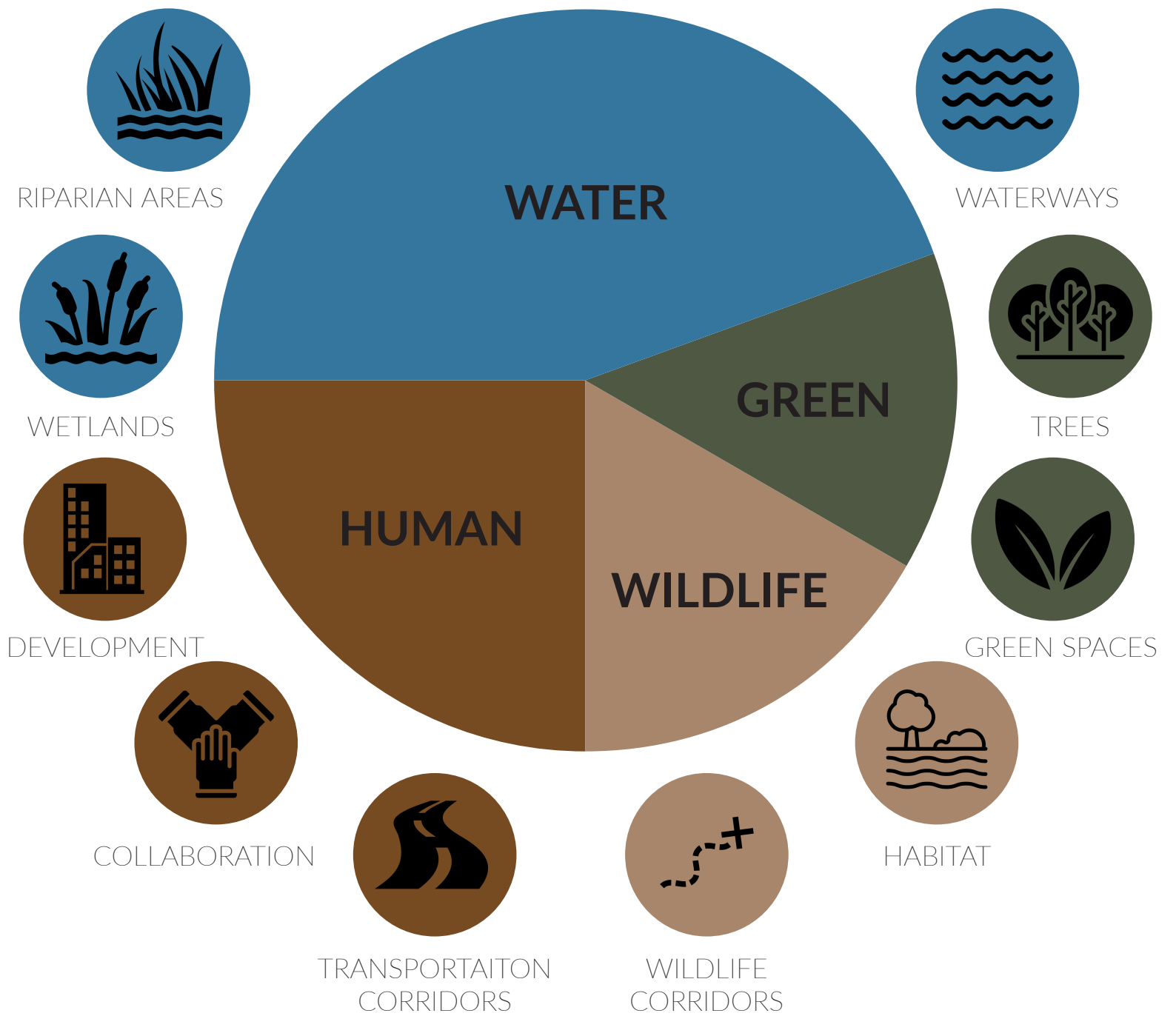


# CONNECTIVITY WHAT WE HEARD

What areas do you consider to be sensitive lands for connectivity? Why?

What data or science should we analyze?

This data is derived from open comment feedback on the Agriculture/Heritage: Connectivity board. This was available at the Love Your Land Open House on February 7th.



## PLACES OF INTEREST



FOWLER

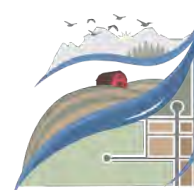


HYALITE



I-90

This input will inform which data is included in the model used to identify sensitive lands in the project study area.



GALLATIN VALLEY  
SENSITIVE LANDS  
PROTECTION PLAN

*Connecting our Landscape, Heritage, and Future on Common Ground*

# Sensitive Lands Survey Results: Comparing Emphasis on Wildlife & Plant Communities

## QUESTION 1

Please consider which of the following provide the most important benefits to the Gallatin Valley or are at the most at risk.



Percentage of votes to each category

- Wildlife habitat (53%)
- Linkage areas (43%)
- Migratory bird habitat (31%)

### 210 of 394

responded that wildlife habitat should be prioritized when considering sensitive lands



Percentage of votes to each category

- Native plant communities (26%)
- Forests (34%)
- Grasslands (26%)

### 103 of 394

felt native plant communities should be a top priority

## QUESTION 5

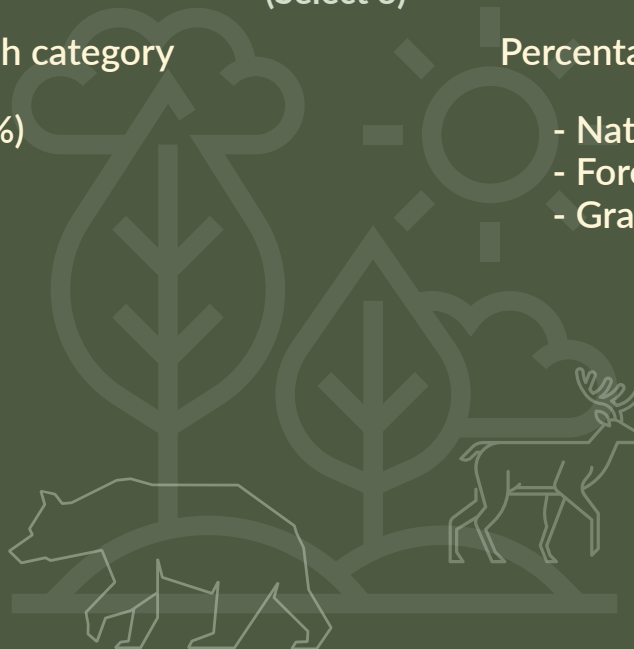
What do you think is most important to consider when protecting vegetation in the Gallatin Valley?  
(Select 3)

Percentage of votes to each category

- Food for wildlife (23%)
- Shelter (17%)
- Pollination (16%)

Percentage of votes to each category

- Native plant communities (18%)
- Forests (09%)
- Grasslands (8.5%)



# AGRICULTURE/HERITAGE



## What's Important

SURVEY SAID.....

Supporting local food production(71%)



Conserving native plants and wildlife habitat(50%)

Supporting local livestock production(49%)



Supporting crop production for regional and natural needs(45%)

## COMMUNITY FEEDBACK

This summary includes feedback gathered from the Senesitive Plans open house on Agriculture/Heritage board



Protect Ag lands

Ag land equals land for wildlife

Protect Waterways

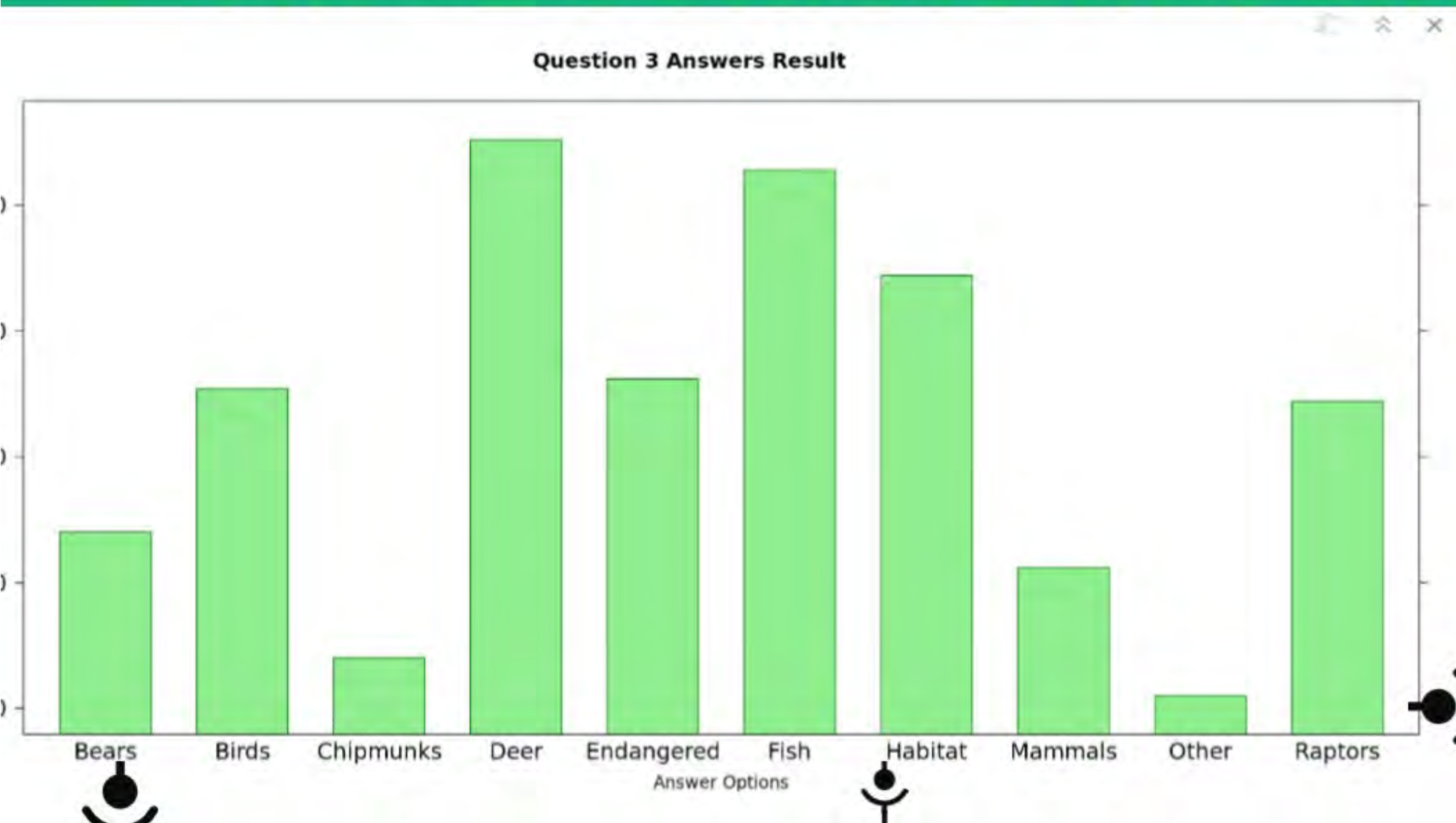
Consider Connectivity with Ag

These inputs will inform which data is included in the model used to identify sensitive lands in the project study area

For more information go to <https://gallatinvalleyplan.bozeman.net>



# What types of wildlife do you think is most important to consider when protecting wildlife habitat in the Gallatin Valley?



Deer, elk, moose, and other ungulates and aquatic species are among the most popular choice for protecting wildlife habitat in the Gallatin Valley

Protecting Chipmunks and other wildlife habitat is the least popular choice.

Deer = "Deer, elk, moose, and other ungulates",  
Bears = "Bears"  
Raptor = "Raptor nesting areas",  
Birds = "Migratory birds",  
Fish = "Native fish and aquatic species",  
Chipmunks = "Rodents chipmunks, squirrels, voles, etc."  
Mammals = "Medium sized mammals coyotes, foxes, etc.",  
Endangered = "Endangered, threatened, or rare species (grizzly bears, Canada lynx, etc.)",  
Habitat = "Connectivity areas between wildlife habitat")  
Other = "Other"

# Working Farms & Ranches

## Survey Question

What do you think is most important to consider when protecting working farms and ranches in the Gallatin Valley?



Entire Survey  
n=396

- Preserving agricultural heritage and sense of place
- Supporting local food production
- Supporting local livestock production
- Supporting crop production for regional and national needs
- Conserving native plants and wildlife habitat (grasslands, wetlands, riparian areas)
- Providing scenic views
- Facilitating natural carbon sequestration

## Responses by location

5% did not select location



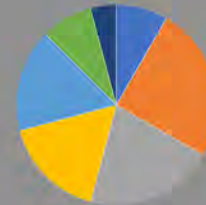
Bozeman responses  
47% of total



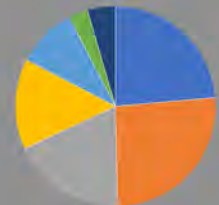
Belgrade responses  
10% of total



Manhattan responses  
3% of total



Three Fork responses  
2% of total

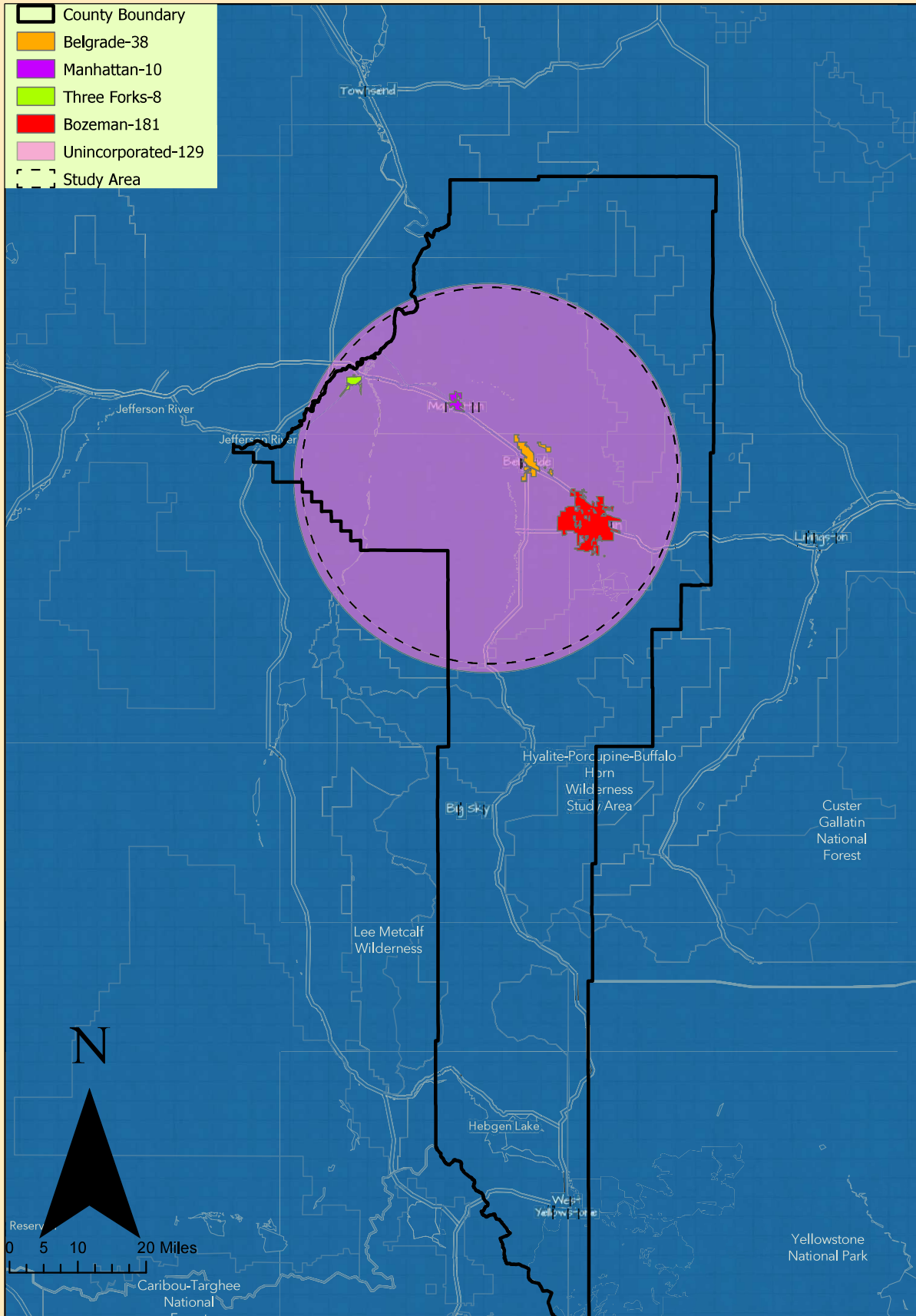


Unincorporated Area responses  
33% of total

# Demographics

This map shows the number of survey responses by which city in the Gallatin Valley Sensitive Lands Survey

Number of Survey Responses



# Gallatin Valley Sensitive Lands Mail Survey

## Types of Water Features to Protect Based On Degree of Water Prioritization

- Degree of Water Prioritization gathered from Question One using a 5 point Lickert Scale scores for "Rivers, Streams, and Wetlands".
- Types of Water Features to Protect based on responses from Question 6 where participants were asked to pick three of 9 choices including a write in option. Some participants choose more than the three allotted and that data has been included.
- Respondents who did not provide an answer for Question 1 "River, Streams and Wetlands" where shown as the null group if they provided an answer for Question 6.

		Access to Clean Drinking Water	Native Fish Population	Aquatic Species Biodiversity	Wildlife Habitat Diversity	Food for Wildlife	Access to Water for Farm and Ranch Irrigation	Resiliency to Natural Disasters	Water Recreation
Total Respondents:	5	22.2%	13.3%	11.9%	17.1%	4.7%	10.6%	13.3%	6.8%
59	4	26.0%	11.8%	5.3%	14.2%	5.9%	18.3%	12.4%	5.9%
7	3	25.0%	0.0%	12.5%	12.5%	6.3%	31.3%	6.3%	6.3%
4	2	33.3%	33.3%	0.0%	0.0%	0.0%	33.3%	0.0%	0.0%
3	1	25.0%	0.0%	0.0%	0.0%	0.0%	50.0%	25.0%	0.0%
23	Null	19.7%	11.5%	4.9%	16.4%	11.5%	19.7%	6.6%	9.8%

Rivers, Streams, Wetlands prioritized with 5 being highest priority and 1 being the lowest. Null did not answer water priority. Types of water features to protect are total counts of participants selecting that feature.	Types of Water Features to Prioritize	Access to Clean Drinking Water	Native Fish Population	Aquatic Species Biodiversity	Wildlife Habitat Diversity	Food for Wildlife	Access to Water for Farm and Ranch Irrigation	Resiliency to Natural Disasters	Water Recreation
	5	194	116	104	149	41	93	116	59
	4	44	20	9	24	10	31	21	10
	3	4	0	2	2	1	5	1	1
	2	1	1	0	0	0	1	0	0
	1	1	0	0	0	0	2	1	0
	Null	12	7	3	10	7	12	4	6



- All groups fairly equally prioritize clean drinking water access at around 25% of total responds.



- Native fish populations had moderate support from respondents averaging 15%.



- Water for agriculture irrigation had increasing support as rivers, streams and wetlands prioritization declined.

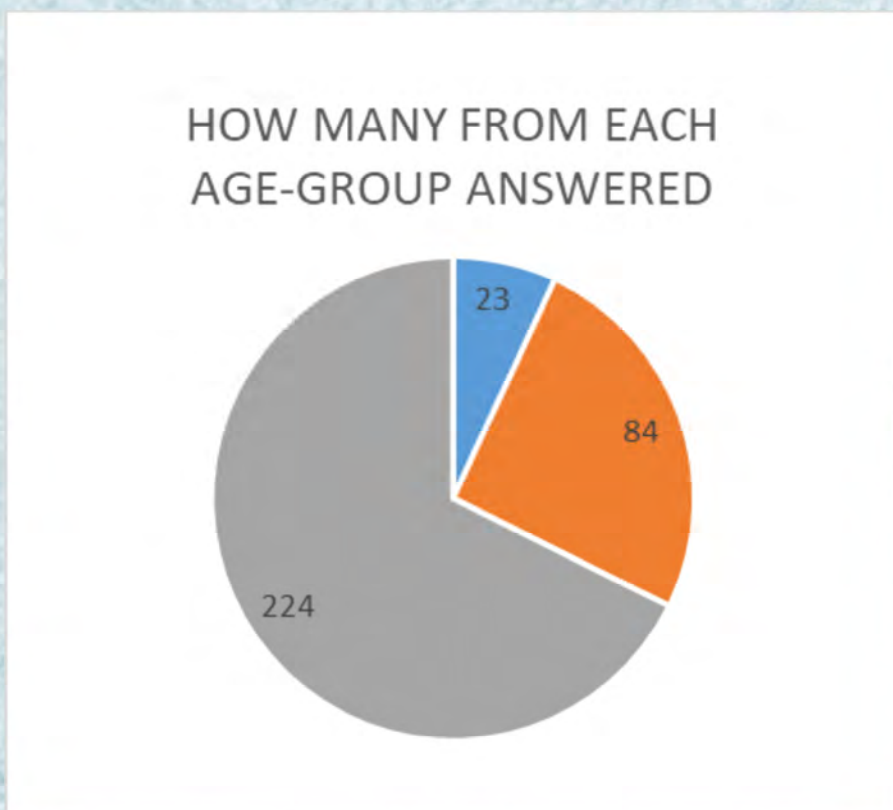
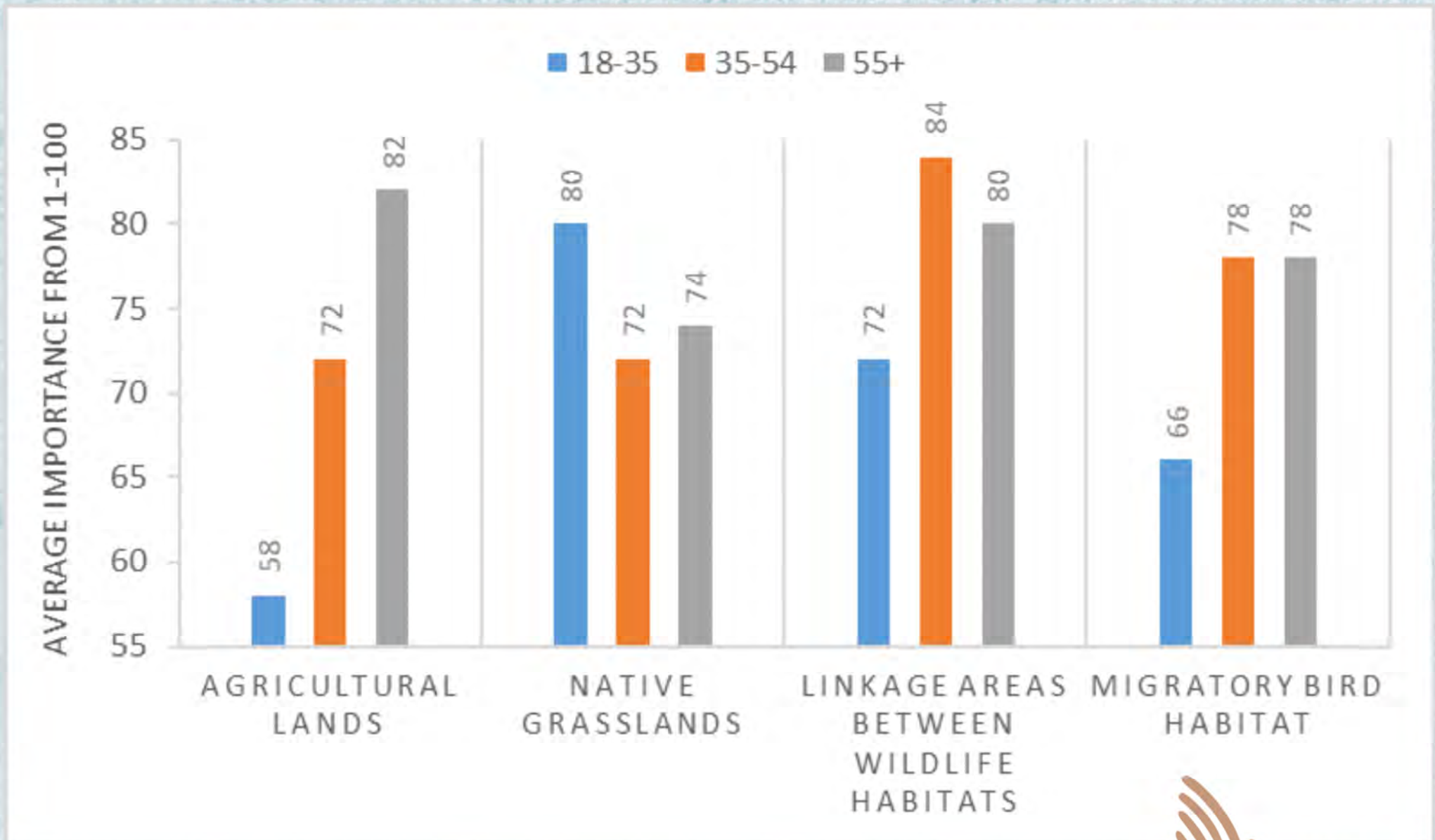


- All groups fairly equally prioritize Water Recreation at a below 10% rate.



# VARIATION IN VALUE OF TYPES OF SENSITIVE LANDS ACROSS AGE GROUPS

This summary includes feedback gathered from surveys hosted by "Gallatin Valley Sensitive Lands Protective Plan"



This data is being used to identify, and prioritize sensitive lands in Gallatin Valley

# What did people think about the survey?

Sticky-note comments from survey board at the open house

## How did the survey reflect people's values?

"Trees - existing large trees as habitat add values"

"Protect Scenery"

"Birds as indicators of ecosystem integrity"

"Wildlife recovery areas during migration"

"Ranking was very challenging for things that are all high value"

## Most common themes

- Keep preserving Gallatin County's 'natural' scenery
- Continue Preserving & monitoring ecosystem health
- Survey format could have been improved

## Feedback on which additional organizations to involve

### Government Agencies

- Gallatin Watershed Council
- Montana DNRC
- Montana Conservation District

### Non-Government Organizations

- Greater Yellowstone Coalition
- Montana outdoor science school for education

### Other Groups

- Agriculture
- Young People
- Local farmers
- Rural Communities

This input will inform which data is included in the model used to identify sensitive lands in the project study area

For more information, go to <https://gallatinvalleyplan.bozeman.net>



# What We Heard



Gallatin Valley Sensitive Lands Protection Plan released an online survey to gather community feedback from citizens of Gallatin Valley and the surrounding area on their opinions of various aspects of the environment. This input will inform which data is included in the model used to identify sensitive lands in the project study area. Below is an analysis of some of the demographic information.

The total population of Gallatin Valley\* is 122,713. The Survey Data received responses from 176 persons or 0.14% of the population.



## 1 Out of 25

respondees of the survey have lived in Gallatin Valley or the surrounding areas for one year or less.

## 22.16%

of all respondents were between the ages of 35 and 44 compared to 14.15% of the total population.



## Comparison and Intersection of Ages

34 of the 52 respondents that were over 55 and had been residents for 20+ years.

50% of respondents fell between the ages of 25 and 54, with 39 of the 176 total respondents being between the ages of 35 and 44.

5.7% of respondents were between ages 18 and 24. This group made up 15.7% of Gallatin Valley's total population.

For more information please go to <https://gallatinvalleyplan.bozeman.net/>

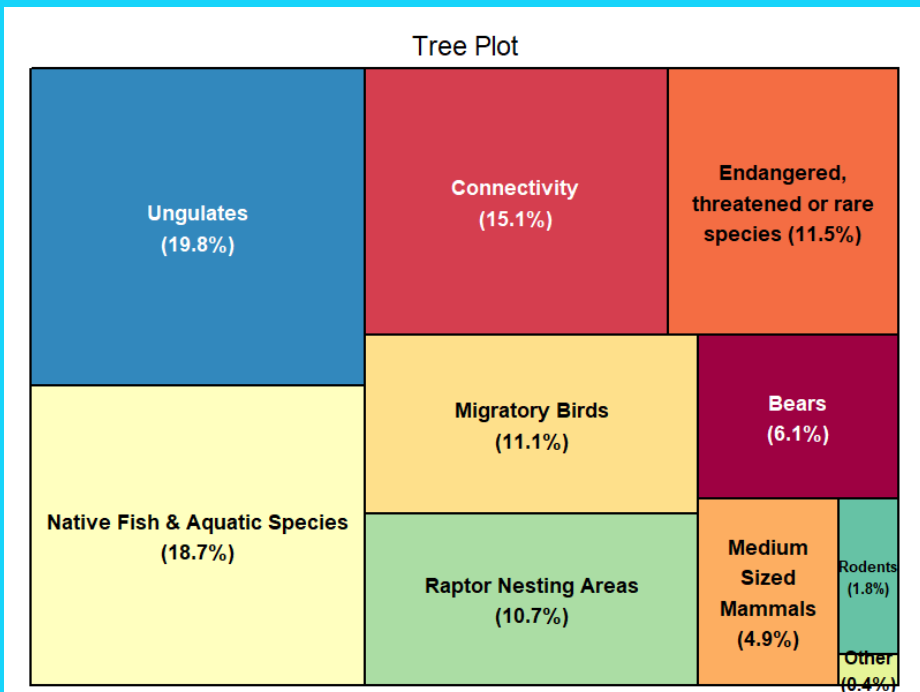
\*Total population data comes from the 2020 census and can be found at [data.census.gov](https://data.census.gov). The data is taken from a rough estimation of the survey's physical scope.

# GALLATIN VALLEY SENSITIVE LANDS SURVEY

ANALYZING STATISTICS OF RESPONSES FROM QUESTIONS 3 AND 4

## “...WILDLIFE MOST IMPORTANT TO CONSIDER...”

This question is asking people what wildlife they think is most important to consider. Ungulates, Native Fish & Aquatic Species, and Connectivity received the most votes. They received 19.8%, 18.7%, and 15.1% of the votes respectively.



## “...MOST IMPORTANT ASPECT OF PROTECTING WORKING FARMS AND RANCHES...”

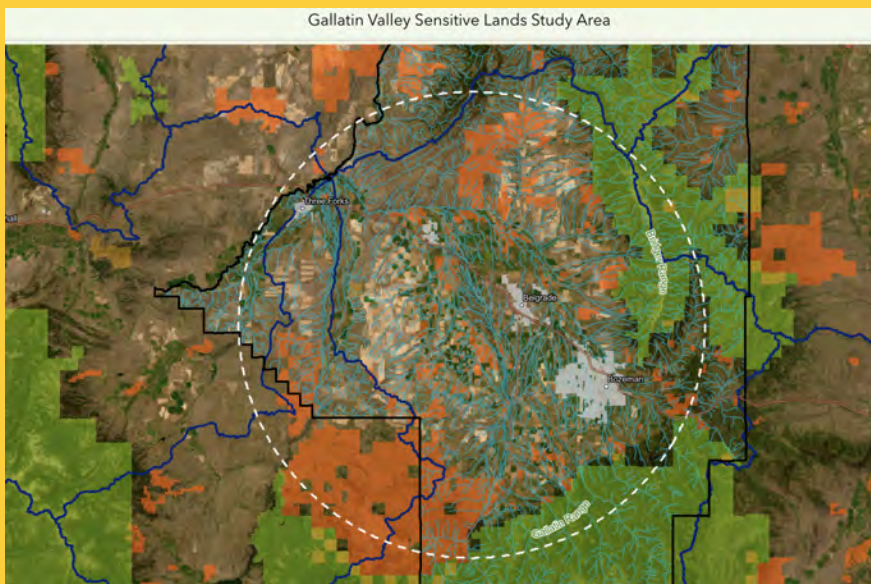
This question is asking what people think is important to protect agriculture in the Gallatin Valley. Heritage & Sense of place, Local Food Production, and Local Livestock Production appeared to have the most interest from the survey.

### UTILIZATION

This input will inform which data is included in the model used to identify sensitive land in the project study area. For more information visit our website. <https://gallatinvalleyplan.bozeman.net/>

# CONNECTIVITY

Shown below are 367 valid respondents' land use priorities and habitat priorities according to the Sensitive Land Survey



(Gallatin Valley Sensitive Lands Protection Plan, 2022)

**96%** of 367  
Respondents

Prioritize  
Rivers, Streams  
and Wetlands

**71%**  
Prioritize the  
linkages  
between wildlife  
habitats

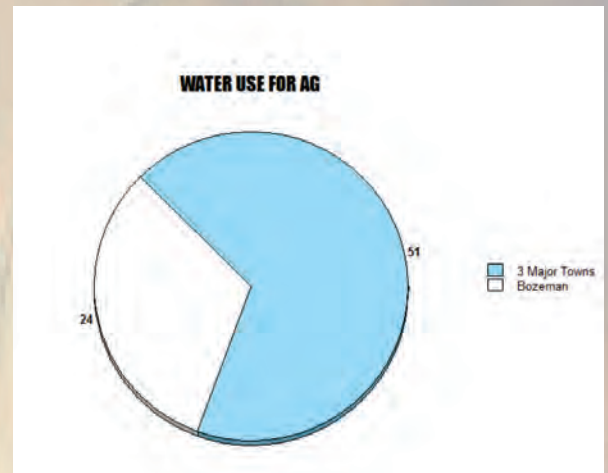
**46%**  
prioritize  
Connectivity  
areas between  
wildlife habitat

# Importance of Water Use Within The Survey Area

## WHY PRESERVE WETLANDS, STREAMS, AND RIVERS?

56% of responses were Bozeman residents who cited their reasoning to preserving wetlands was to protect water quantity and quality for aquatic life and recreation.

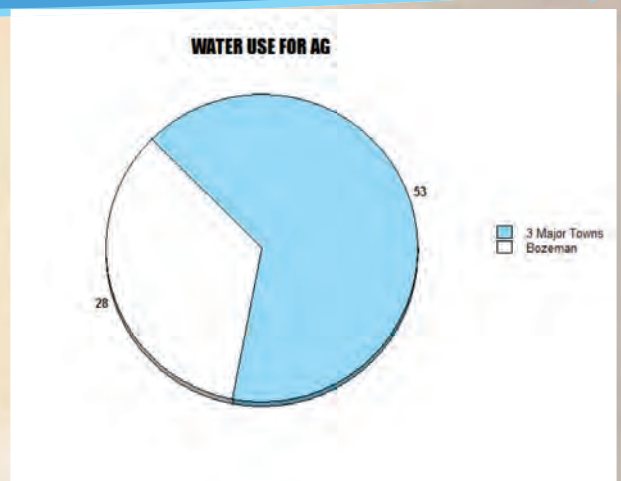
34% of respondents put agricultural use as the most important consideration regarding water use, but only 24% of Bozeman residents prioritized this, under the 51% of residents from the other three major towns.



## REASONING FOR PROTECTING VEGETATION AND RIPARIAN ZONES

According to the survey, preserving water quality is the most important aspect of protecting vegetation, with 64% of survey takers responding this way.

However, when asked about use for agricultural purposes 38% of respondents said agricultural uses were a priority, with only 28% of Bozeman residents believing so, while Three Forks, Manhattan, and Belgrade had 53% of residents place this as a priority.



## FINAL THOUGHTS

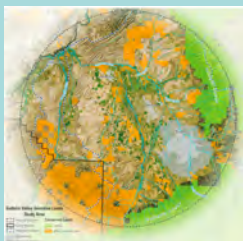
It appears as if the majority of respondents to the survey believe in the importance of water in the survey area, but their ideal uses of it differ. Bozeman tends to focus on a more recreational and habitat side of it, while the three other major towns in the survey area (Belgrade, Manhattan, and Three Forks) agree with Bozeman on the importance of clean drinking water, but would rather see it go towards agricultural uses over preserving aquatic life and restoration. A cause for this discrepancy could be due to the fact that 50% of survey takers lived in Bozeman, and only 15% of the other three towns were recorded.

# The Gallatin Valley Sensitive Lands Protection Plan Survey

By: Ellen Olson

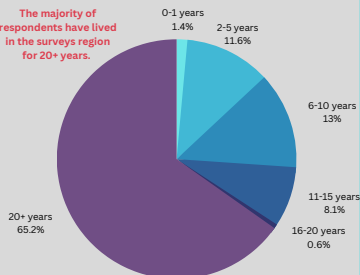
The purpose of the the Gallatin Valley Sensitive Lands Protection Plan Survey is to gain a better understanding of Gallatin residents' values regarding sensitive lands. The region includes a portion of Gallatin County, Montana; this includes Bozeman, Belgrade, Manhattan, and Three Forks. You can learn more about the project at: <https://gallatinvalleyplan.bozeman.net/>.

## AREA OF STUDY:



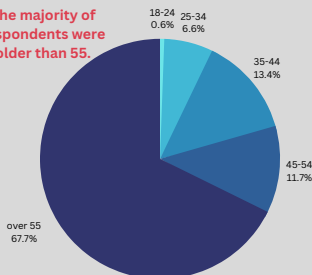
### Respondents Length of Residence (r=345):

The majority of respondents have lived in the surveys region for 20+ years.

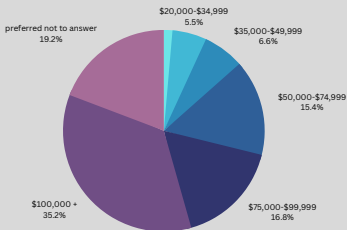


### Respondents Age (r=366):

The majority of respondents were older than 55.

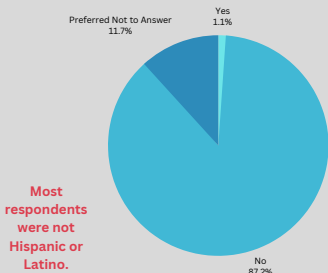


### Household Income of Respondents (r=364):



The majority of respondents household income exceeded \$100,000.

### Are Respondents Hispanic or Latino (r=366):



Most respondents were not Hispanic or Latino.

### Respondents Race (r=308):

- **Native Indian or Native Alaskan: 9.7%**
- **Asian or Asian American: 3.2%**
- **Black or African American: 3.2%**
- **White: 73.1%**
- **Native Hawaiian or Pacific Islander: 3.2%**
- **Write In: 3.2%**
- **Preferred Not to Answer: 14.9%**

The survey's respondents do not have a lot of diversity, however neither does Gallatin Valley.

### Census Data(Race) of Gallatin Count.:

- **Native Indian or Native Alaskan: 1%**
- **Asian or Asian American: 1.7%**
- **Black or African American: 0.5%**
- **White: 94.5%**
- **Native Hawaiian or Pacific Islander: 0.1%**

### NUMBER OF SURVEY RESPONDENTS FROM EACH AREA

- **Bozeman: 181**
- **Belgrade: 38**
- **Manhattan: 10**
- **Three Forks: 8**
- **Unincorporated: 129**

3.3% of Bozeman's and Belgrade's population were represented in the survey. 5.3% of Manhattan's population is represented in the survey. 3.8% of Three Fork's population is represented in the survey.

### Gallatin Valley Census Data:

- **Bozeman: 54,539**
- **Belgrade: 11,608**
- **Manhattan: 1,884**
- **Three Forks: 2,804**

# Data Analysis

```
# Define the column names you're interested in, this time for question 5
columns_of_interest <- c("Q5_a", "Q5_b", "Q5_c", "Q5_d", "Q5_e", "Q5_f", "Q5_g", "Q5_h", "Q5_i", "Q5_j",
"Q5_k")

# Create an empty list to hold the results
count_list2 <- list()

# Loop through each column of interest in your dataset
for (col_name in columns_of_interest) {

  # Remove NAs from the column
  col_data <- na.omit(Subsetq5[, col_name])

  # Count the number of occurrences of each unique value
  col_counts <- table(col_data)

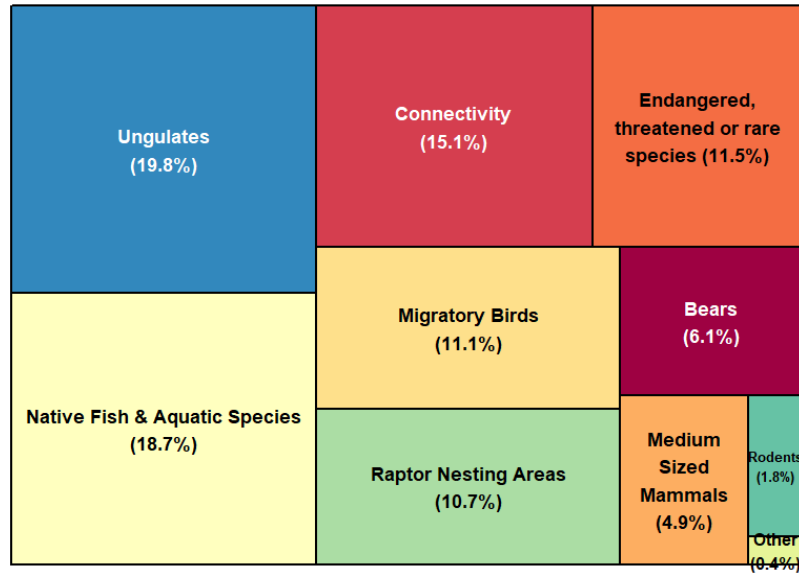
  # Add the list of counts for this column to our overall count list
  count_list2[[col_name]] <- col_counts
}

# Print the resulting list of counts
print(count_list2)
```

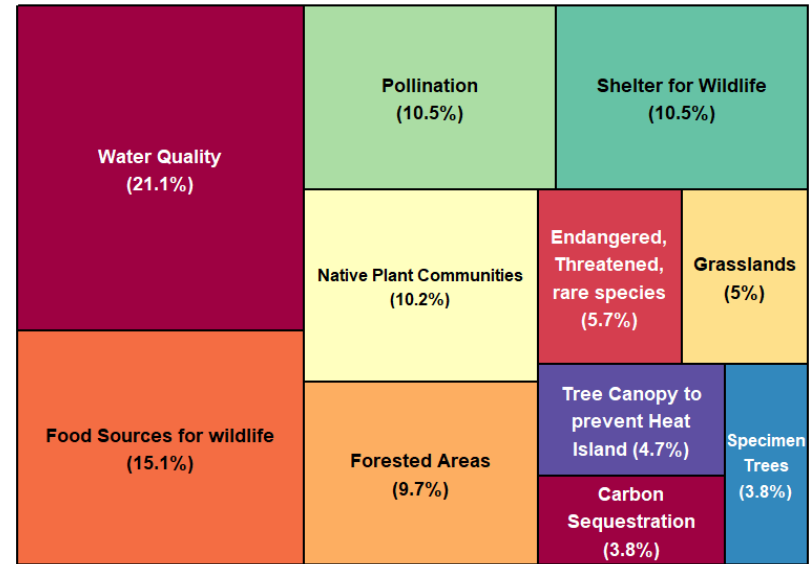


# Tree Graphs

Tree Plot



Tree Plot





# Wildlife protection importance to Gallatin Valley residents.



## Most important vegetation to protect.





# Board 8 Responses

## Theme: Agriculture/Heritage

What areas do you consider to be sensitive lands for wildlife and biodiversity? Why? What data or science should we analyze?

### Plants

**Comment:**  
 “Mature trees are so valuable and can’t be replaced quickly.”



### Wetlands

**Comment:**  
 “Wetlands are of highest value to preserve and protect.”



### All Biodiversity

**Comment:**  
 “Wildlife should be preserved for more than ungulates, broaden the scope to include birds and pollinators. All biodiversity.”



### Existing Ecosystems

**Comment:**  
 “Unconverted native plains and forests.”



**What We Heard**  
 Focus on all biodiversity and not just one group of wildlife.

**What We Heard**  
 Protect native plant and wetland ecosystems in the development and growth around the county.

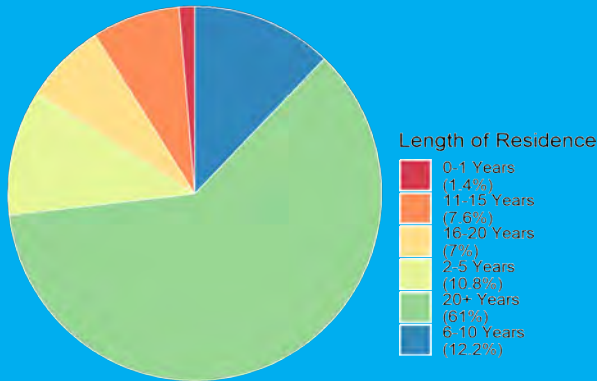




# Demographics

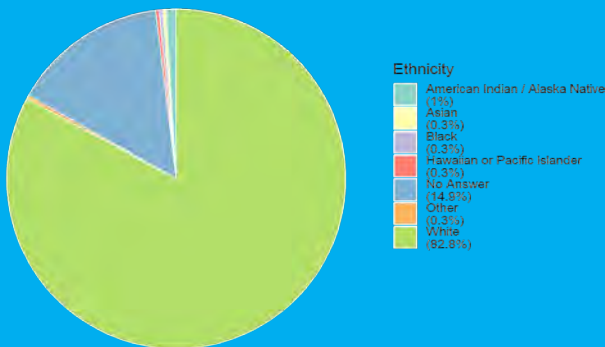


## Length of Residents



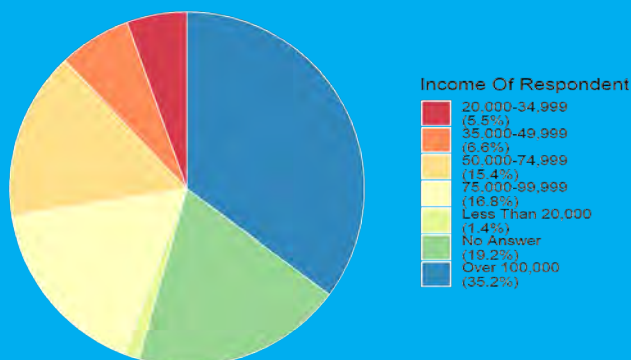
*The Length of Residence Increases the likely hood of completing the survey.*

## Ethnicity of Gallitan Valley

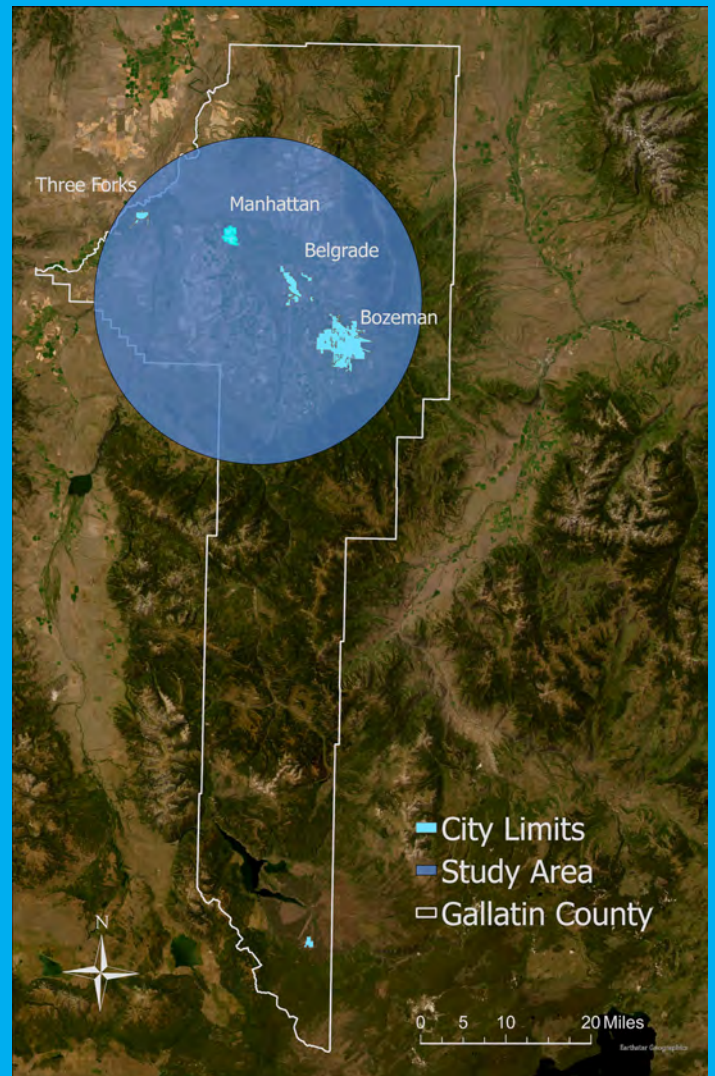


*Hispanic/Latino population was not included in survey data.  
4.5% in Gallatin Valley is Hispanic/Latino  
90.6% White*

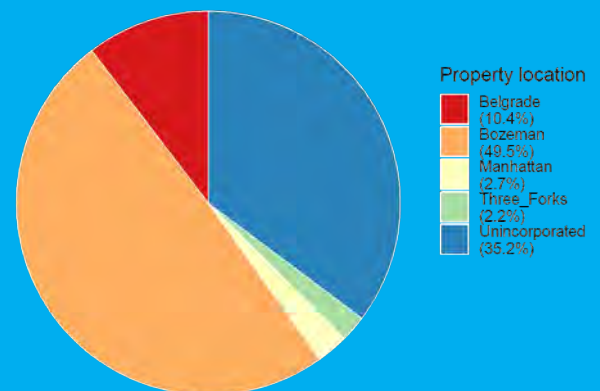
## Income of Residents



*52% of responses from the survey came from residents making over \$75,000 per year  
Average Income \$76,208*



## Property Location of Survey Respondents



*44% of total Population in the Gallatin Valley lives in Bozeman  
With 49.5% of responses from Bozeman  
9.5% of total Population lives in Belgrade  
With 10.4% of responses from Belgrade*

# HAPPY SPRING • BREAK •

Artwork by Alex Katja



Artwork is the property of Cinnamon Cooney and The Art Sherpa LLC